



Formosa 46 – Redwings

Make:	Formosa	Boat Name:	Redwings
Model:	46	Hull Material:	Fiberglass
Length:	46 ft	Draft:	6 ft 4 in
Price:	\$ 109,000	Number of Engines:	1
Year:	1980	Fuel Type:	Diesel
Condition:	Used	Number:	957910
Location:	Camden, ME, United States		



Redwings

Redwings is a fully found, lovingly maintained offshore equipped center cockpit cruiser with wonderful lines, Doug Peterson lineage, and performance that will expeditiously get you to your next port of call in comfort and safety. She has already proven herself on most of the world's oceans and is ready to deliver you to your dream destination. Priced competitively this yacht has been well maintained and offers great value on today's market.

East Coast Yacht Sales - Scott Woodruff, CPYB
44 Bayview Street, Camden, ME 04843, United States
Toll-free: 877-225-6658 Tel: 207-236-8656
swoodruff@ecys.com
<http://www.yachtworld.com/eastcoastyachtsales>

East Coast Yacht Sales - Scott Woodruff, CPYB
Tel: 207-236-8656 swoodruff@ecys.com
<http://www.yachtworld.com/eastcoastyachtsales>

Measurements

LOA:	45 ft 3 in	Ballast:	11400 lb
LWL:	39 ft 9 in	Displacement:	30000 lb
Beam:	12 ft 10 in	Windlass:	Electric Windlass
Max Draft:	6 ft 4 in		

Hull & Deck

The hull is molded, laminated fiberglass with a 3/4 fin keel and a molded rudder skeg. The decks are laminated fiberglass with a marine plywood core.

- Decks re-pitched and rebuilt with filler and fiberglass to improve water drainage and integrity ~ 2005
- Cockpit rebuilt ~ 2006
- Decks painted with awl-grip and nonskid in traffic areas ~ 2007
- Coachroof refinished ~ 2007
- Raised toe rails with teak caps, closed chocks through the raised rail all completely rebuilt ~ 2011
- Stripped bottom to gelcoat, filled, faired and (4) coats of Interprotect barrier coat applied ~ 2015

Sails

- UK main sail (serviceable) ~1997
- UK 150% mylar genoa (serviceable) ~ 1997
- Pope dacron mainsail ~ 2010
- Pope 130% dacron genoa ~2010
- Spinnaker
- Storm jib
- Storm trisail
- Staysail

Rigging

Keel stepped painted Alspar mast equipped with steps. Painted Alspar boom with stainless and teak permanent boom crutch. All 1x19 Dyform stainless 10mm rigging with swaged fittings and stainless turnbuckles; back stay with Harken adjuster and insulators.

- (2) Forespar poles
- (1) reaching strut
- Forespar boom vang

- Harken traveller
- Harken roller furler
- Harken Batcar system for mainsail

Propulsion

The Formosa has a Ford Lehman 4-cylinder 80 horse power engine. It was rebuilt in 1993 and it has around 4,461 hours since the rebuild.

- Flex engine mounts on steel beds side bolted to molded stringers
- Fresh water cooled with raw water heat exchange
- Oil cooler
- 1.5" stainless steel shaft
- External bronze stern tube housing with bronze cutlass bearing
- Transmission, shaft and prop bearing replaced/rebuilt ~ 2012
- Volvo Penta rubber shaft seal

Electronics

At Helm

- Garmin GPSmap 541s chartplotter ~ 2013
- B&G Network Quad depth, speed, and wind instruments with repeaters
- Simrad AP24 autopilot
- Ritchie compass

At Navigation Station

- Simrad NSS8 chartplotter/radar ~2013
- Simrad 2kw Radar 2013
- I-Com IC-M304 submersible marine VHF
- Standard Horizon portable VHF
- B&G Net Work Data repeater
- Appelco FishFinder XCD550

- Jensen MSR3012 marine stereo
- Jensen speakers

In Aft Cabin Companionway

- ICom IC-M4028 marine VHF

Electrical

- 12-volt battery system with (8) 6-volt batteries
- 12-volt lighting in cabin and engine room
- Rule 2000 pump
- Rule 1000 pump
- Deck lights
- Spreader lights
- 140-watt solar panel ~ 2013
- 48-watt solar panel ~ 1995
- Heart Interface Link 20
- Pro Watt 1750 inverter with Blue Seas switch and T-class fuse

Tankage

Fuel System - 112 gallons:

- (1) Aluminum tank blocked in place below berth in walkway ~ 2008
- (2) Polyethylene tanks blocked in place in port sail locker and covered with plywood shelf
- (3) Deck fills

Water System - 110 gallons:

- (4) Polyethylene custom built tanks by Lyman Morse Boat Building blocked in place in main bilge and below settees in main salon
- (3) deck fills

Sanitary System - 10 gallons:

- (1) Polyethylene tank for the forward head
- (1) Deck pumpout fitting

Cockpit

The well protected center cockpit is well protected behind an oversized dodger with removable sun extension back to the gallows and complete deck awning. The primary winches are on the combing running rigging leading aft to the cockpit. Edson steering with chain to wire to quadrant

- Teak decking on seating
- Teak grating over sole
- Varnished teak trim
- (4) Cubby hole storage compartments in combing
- Edson steering with chain and wire leading to the quadrant
- Emergency tiller stored
- Suite of electronics
- Magma grill
- (2) Lewmar 48 self-tailing primary winches
- (3) Lewmar 40 self-tailing winches
- Harken (2) speed winch
- Lewmar (2) speed 30
- (7) Single rope clutches
- (2) Triple rope clutch stacks

Galley

As you step down the forward companionway into Redwings salon, immediately to port is the U-shaped galley. The area features:

- Stainless steel double basin galley sink
- Hot/cold pressurized fresh water
- 110-volt outlet
- Fireboy Xintex S-2A propane detector interface
- 12 volt refrigeration
- Force 10 (3) burner stove with oven and broiler ~ 2015
- (2) opening ports above
- Built in storage racks
- Storage above and below work surfaces
- Dome lighting above fridge
- Adjustable light above stove

- 12-Volt fan

Salon

Just forward of the galley, and navigation station, is the salon. It features a U-shaped port side settee, with a single berth opposite. Other features are:

- Dome overhead lighting
- Book shelves port and starboard outboard above settee
- Locker and drawer storage port and starboard above settee
- Adjustable salon table
- Built-in rod holders above starboard settee
- Large overhead deck hatch
- Credenza storage above and below work/storage surface
- Built in magazine rack

Heads

The forward head is located forward of the salon on the port side with access from the salon and forward cabin. Features include:

- Manual marine head
- Hot/cold pressurized water
- Shower wand mixer head
- Locker storage above head
- Locker storage below sink
- 110-volt outlet
- Single stainless steel sink basin
- Opening portlight
- Overhead dome lighting
- Mirror above sink

The aft head is located at the base of the aft companionway from the cockpit and to port. This area features:

- Manual marine head
- Hot/cold pressurized water
- Shower wand mixer head
- Locker storage above head
- Locker storage below sink

- 110-volt outlet
- Single stainless steel sink basin
- Opening portlight
- Overhead dome lighting
- Mirror above sink

Forward Cabin

The Forward cabin and anchor locker are located in the bow with access from the salon and the forward head. With nice light and ample storage this area boasts:

- V-berth is infill
- Large overhead hatch
- Hanging storage
- Shelf storage port and starboard above v-berth
- Lockers port and starboard above v-berth
- Large hanging locker aft and to starboard of berth
- Credenza aft and to port of berth
- Overhead dome light
- 12-volt fan
- Access door to chain locker

Navigation Station

The navigation station is to the starboard side of the boat, opposite of the galley. with easy access to forward companionway this area is well located and also features:

- Lift top chart storage area with drawer storage below
- Cubby storage outboard
- Full suite of electronics
- Fuel tank gauges
- Stereo with speaker
- Adjustable light

Lower Companionway

Located aft of the navigation station and accessible from the salon and aft cabin, this area offers additional sleeping as well as great access to the engine compartment. This area has:

- Portlight
- Locker storage inboard forward
- Access to engine compartment
- Single bunk

Aft Cabin

The aft cabin is located aft of the cockpit and is accessible through a . lower companionway going aft from the navigation station on the starboard side or through the aft companionway from the cockpit. This space features:

- Lockers forward
- Opening portlight
- (3) portlights
- Overhead hatch
- Credenza with storage
- Ensuite head
- Shelf storage port and starboard above bunk
- Locker storage port and starboard above bunk
- Built-in magazine rack

Additional

- 12-volt high water bilge alarm
- Whale manual pump in cockpit
- Bruce 30 kg anchor with 200' of 7/16" chain
- Lofrans 12 volt windlass; stainless anchor roller
- Edson steering binnacle with new Ritchie compass
- Kanseatic clock and barometer set

Represented by a Certified Professional Yacht Broker (CPYB)

A Certified Professional Yacht Broker (CPYB) is recognized as having achieved the highest level of industry accreditation, available only to fully-qualified yacht sales professionals. The CPYB program is administered by Yacht Brokers Association of America in partnership with Florida Yacht Brokers Association, Northwest Yacht Brokers Association, California Yacht Brokers Association, Boating Ontario Dealers, British Columbia Yacht Brokers Association and Gulf Coast Yacht Brokers Association.

The CPYB program is also endorsed by the Marine Retailers Association of the Americas (MRAA) Marine Industry Certified Dealership (MICD) program and leading yacht manufacturers as a key component of their own industry standards; the highest level of achievement for their member yacht sales professionals.

Experience & Validity

The CPYB designation is earned by eligible yacht sales professionals, who, after serving a minimum of three years as a full-time professional, have successfully completed a comprehensive written examination to validate professional competency.

Continuing Education

A CPYB is committed to their personal and professional development through continuing education, as mandated for CPYB recertification every three years.

Ethics & Standards

A CPYB adheres to, and is accountable to, a nationally recognized Code of Business Ethics and conducts yacht sales transactions in accordance with a stringent set of industry standards of practice.

Fiduciary Responsibility

A CPYB maintains a dedicated escrow/trust account to protect their client's funds. A CPYB understands their fiduciary responsibility and obligations with respect to client funds.

Transaction Management

A CPYB uses proven, industry-recognized transaction documents, which fully and clearly describe all terms and conditions of a transaction. Honesty & Integrity A CPYB maintains the highest standards of professionalism, acting with honesty and integrity.

Trust & Confidence

A CPYB instills confidence, trust and consistency in all transactions involving fellow yacht sales professionals for the benefit of the client.

Disclaimer

The Company offers the details of this vessel in good faith but cannot guarantee or warrant the accuracy of this information nor warrant the condition of the vessel. A buyer should instruct his agents, or his surveyors, to investigate such details as the buyer desires validated. This vessel is offered subject to prior sale, price change, or withdrawal without notice.

Photos



Formosa 46 - Redwings - Sailing



Formosa 46 - Redwings - Sailing



Formosa 46 - Redwings - Sailing



Formosa 46 - Redwings - Sailing



Formosa 46 - Redwings - On Mooring



Formosa 46 - Redwings - On Mooring



Formosa 46 - Redwings - On Mooring



Formosa 46 - Redwings - On Mooring



Formosa 46 - Redwings - On Mooring



Formosa 46 - Redwings - On Mooring



Formosa 46 - Redwings - On Mooring



Formosa 46 - Redwings - On Mooring



Formosa 46 - Redwings - On Mooring



Formosa 46 - Redwings - On Mooring



Formosa 46 - Redwings - On Mooring



Formosa 46 - Redwings - On Mooring



Formosa 46 - Redwings - On Mooring



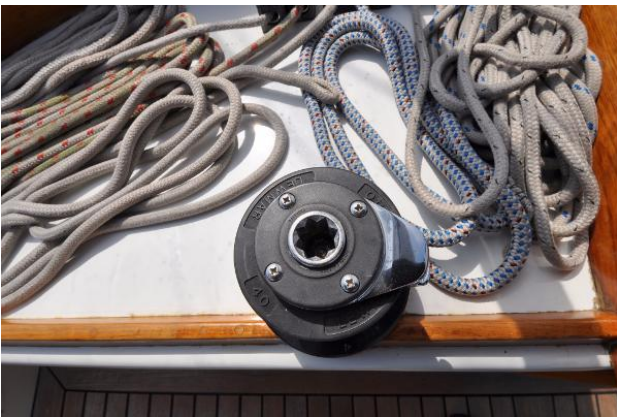
Formosa 46 - Redwings - Cockpit



Formosa 46 - Redwings - Cockpit



Formosa 46 - Redwings - Cockpit



Formosa 46 - Redwings - Cockpit



Formosa 46 - Redwings - Cockpit



Formosa 46 - Redwings - Cockpit



Formosa 46 - Redwings - Cockpit



Formosa 46 - Redwings - Cockpit



Formosa 46 - Redwings - Cockpit



Formosa 46 - Redwings - Cockpit



Formosa 46 - Redwings - Cockpit



Formosa 46 - Redwings - Cockpit



Formosa 46 - Redwings - Cockpit



Formosa 46 - Redwings - Cockpit



Formosa 46 - Redwings - Cockpit



Formosa 46 - Redwings - Cockpit



Formosa 46 - Redwings - Cockpit



Formosa 46 - Redwings - Cockpit



Formosa 46 - Redwings - Cockpit



Formosa 46 - Redwings - Cockpit



Formosa 46 - Redwings - Aft Deck



Formosa 46 - Redwings - Aft Deck



Formosa 46 - Redwings - Aft Deck



Formosa 46 - Redwings - Cockpit



Formosa 46 - Redwings - Aft Deck



Formosa 46 - Redwings - Aft Deck



Formosa 46 - Redwings - Aft Deck



Formosa 46 - Redwings - Solar



Formosa 46 - Redwings - Stackpack



Formosa 46 - Redwings - Weatherdeck



Formosa 46 - Redwings - Weatherdeck



Formosa 46 - Redwings - Coachroof



Formosa 46 - Redwings - Coachroof



Formosa 46 - Redwings - Foredeck



Formosa 46 - Redwings - Bow



Formosa 46 - Redwings - Bow



Formosa 46 - Redwings - Deck



Formosa 46 - Redwings - Coachroof



Formosa 46 - Redwings - Dodger



Formosa 46 - Redwings - Dodger



Formosa 46 - Redwings - Salon



Formosa 46 - Redwings - Galley



Formosa 46 - Redwings - Galley



Formosa 46 - Redwings - Galley



Formosa 46 - Redwings - Galley



Formosa 46 - Redwings - Galley



Formosa 46 - Redwings - Galley



Formosa 46 - Redwings - Galley



Formosa 46 - Redwings - Galley



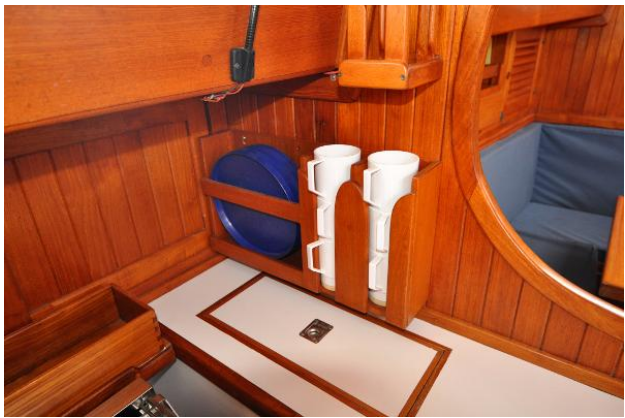
Formosa 46 - Redwings - Galley



Formosa 46 - Redwings - Galley



Formosa 46 - Redwings - Galley



Formosa 46 - Redwings - Galley



Formosa 46 - Redwings - Galley



Formosa 46 - Redwings - Salon



Formosa 46 - Redwings - Salon



Formosa 46 - Redwings - Salon



Formosa 46 - Redwings - Salon



Formosa 46 - Redwings - Forward Head



Formosa 46 - Redwings - Forward Head



Formosa 46 - Redwings - Forward Head



Formosa 46 - Redwings - Forward Head



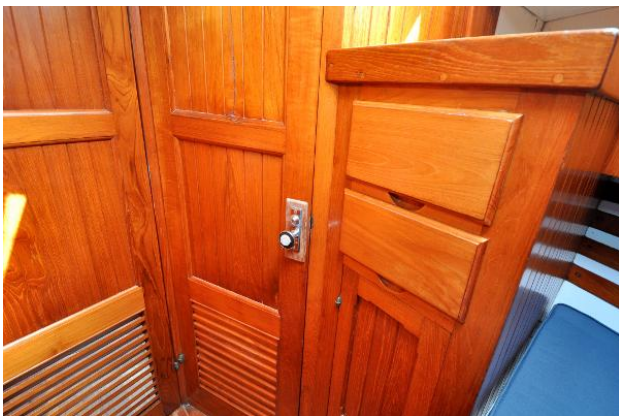
Formosa 46 - Redwings - Forward Head



Formosa 46 - Redwings - Forward Head



Formosa 46 - Redwings - Forward Cabin



Formosa 46 - Redwings - Forward Cabin



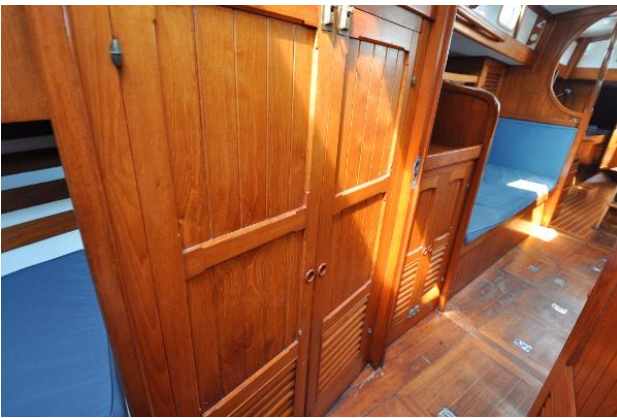
Formosa 46 - Redwings - Forward Cabin



Formosa 46 - Redwings - Forward Cabin



Formosa 46 - Redwings - Forward Cabin



Formosa 46 - Redwings - Forward Cabin



Formosa 46 - Redwings - Salon



Formosa 46 - Redwings - Salon



Formosa 46 - Redwings - Salon



Formosa 46 - Redwings - Salon



Formosa 46 - Redwings - Salon



Formosa 46 - Redwings - Navigation Station



Formosa 46 - Redwings - Navigation Station



Formosa 46 - Redwings - Navigation Station



Formosa 46 - Redwings - Navigation Station



Formosa 46 - Redwings - Navigation Station



Formosa 46 - Redwings - Navigation Station



Formosa 46 - Redwings - Navigation Station



Formosa 46 - Redwings - Navigation Station



Formosa 46 - Redwings - Navigation Station



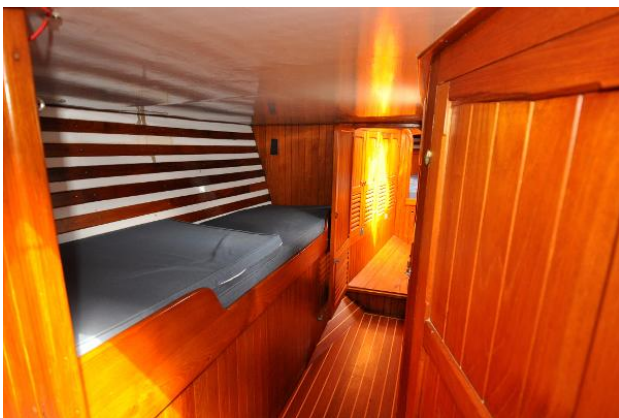
Formosa 46 - Redwings - Navigation Station



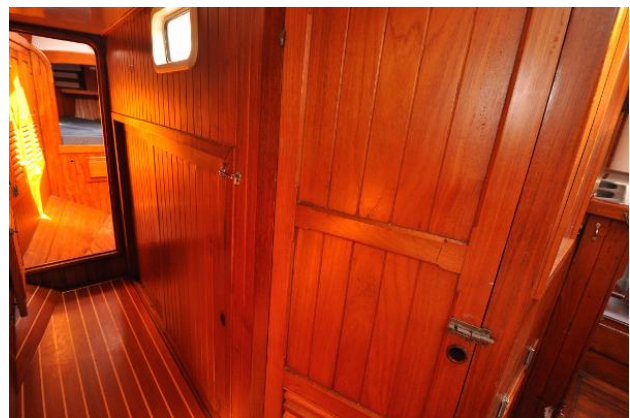
Formosa 46 - Redwings - Navigation Station



Formosa 46 - Redwings - Electric Panel



Formosa 46 - Redwings - Companionway



Formosa 46 - Redwings - Companionway



Formosa 46 - Redwings - Aft Cabin



Formosa 46 - Redwings - Aft Cabin



Formosa 46 - Redwings - Aft Cabin



Formosa 46 - Redwings - Aft Cabin



Formosa 46 - Redwings - Aft Cabin



Formosa 46 - Redwings - Aft Head



Formosa 46 - Redwings - Aft Head



Formosa 46 - Redwings - Aft Head



Formosa 46 - Redwings - Aft Head



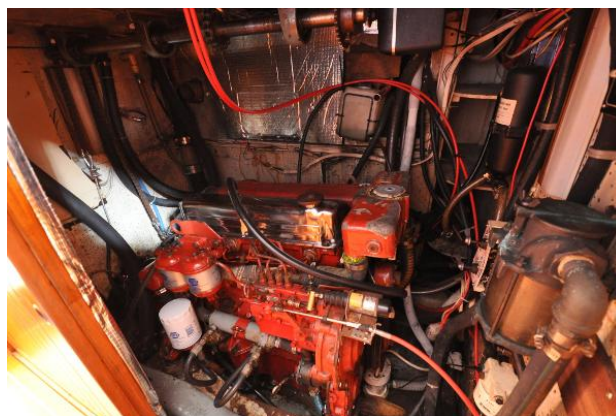
Formosa 46 - Redwings - Aft Cabin



Formosa 46 - Redwings - Aft Cabin



Formosa 46 - Redwings - Cabin



Formosa 46 - Redwings -Engine