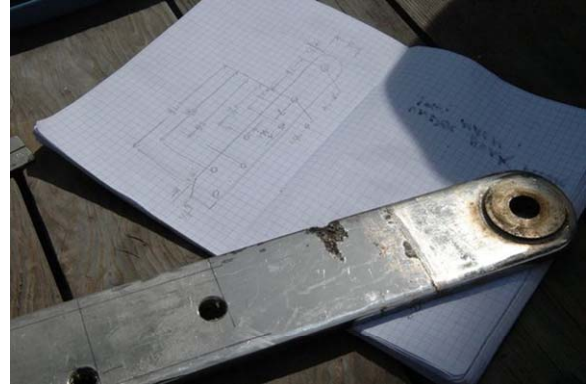




Serious Crevice Corrosion



Corrosion at deck level



Using 2x6 to remove the plates



Raw plates after cutting  
Note Starboard™ blocks which will become the covers



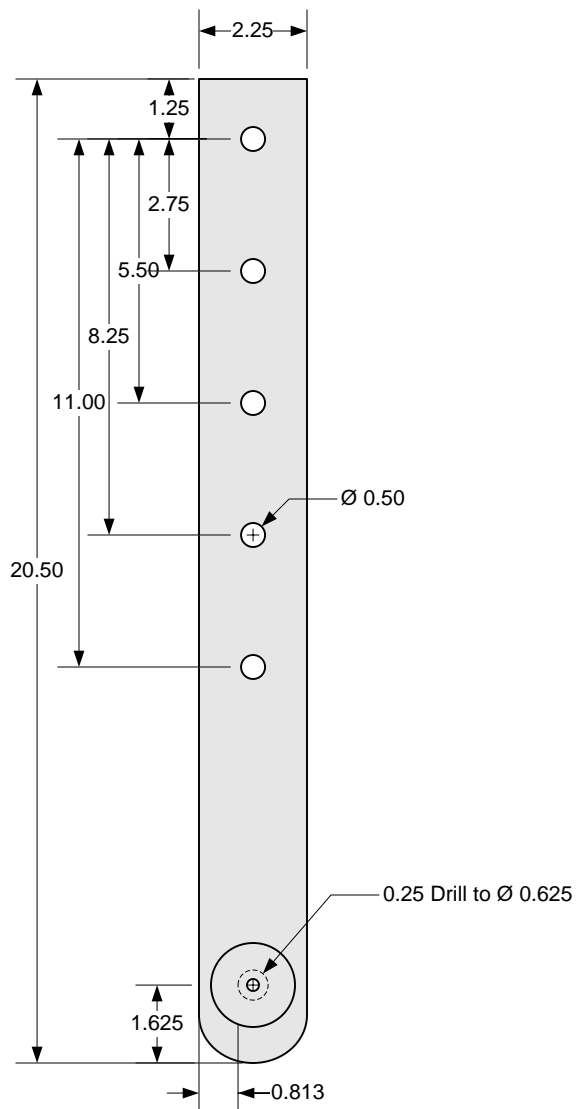
Sanding Disks 40 to 400 grit



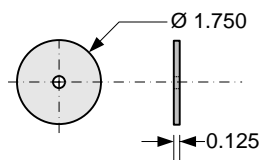
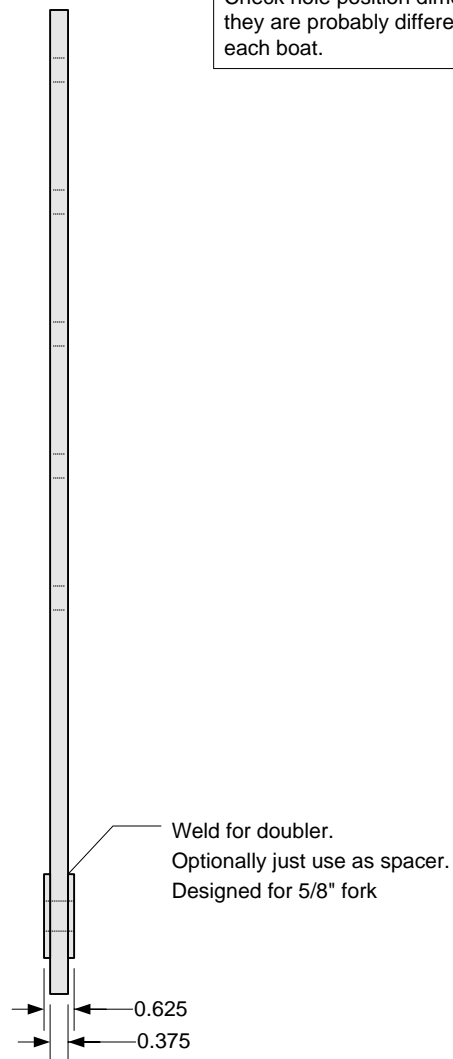
Polished

S/V BEATRIX - KELLY-PETERSON 44 #286 (1980)

TITLE				PAGE
Chainplates - Project Photos				1 OF 10
REV.	DESCRIPTION	DATE	BY	Chainplates.vsd
A	Project Photos of the Port and Starboard Chainplate Replacement	7/14/2007	JMS	Scale: 1/4 : 1



**NOTE:**  
Check hole position dimensions – they are probably different for each boat.



Doubler (2 reqd.)

Tensile Strength =  $0.813 * 2 * 0.375 * 80000 = 48,750$  lbs

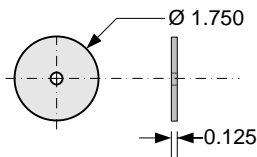
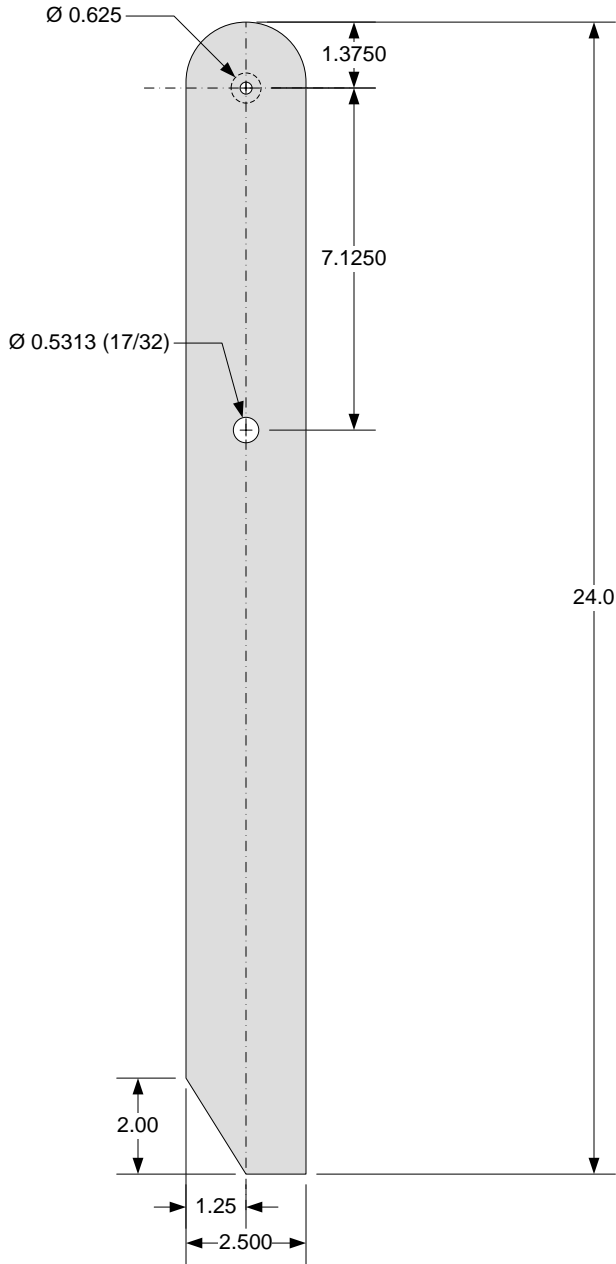
3/8 1x19 Wire Break Load = 14,434 lbs

5/16" is adequate thickness but 316 SS costs less in 3/8"

S/V BEATRIX - KELLY-PETERSON 44 #286 (1980)

TITLE				PAGE
Chainplates - Backstay				2 OF 10
REV.	DESCRIPTION	DATE	BY	Chainplates.vsd
A		7/14/2007	JMS	Scale: 1/4 : 1

Intermediate Chainplate  
3/8" 316 SS  
Qty 2

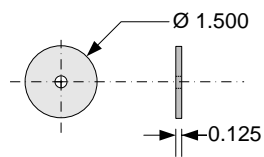
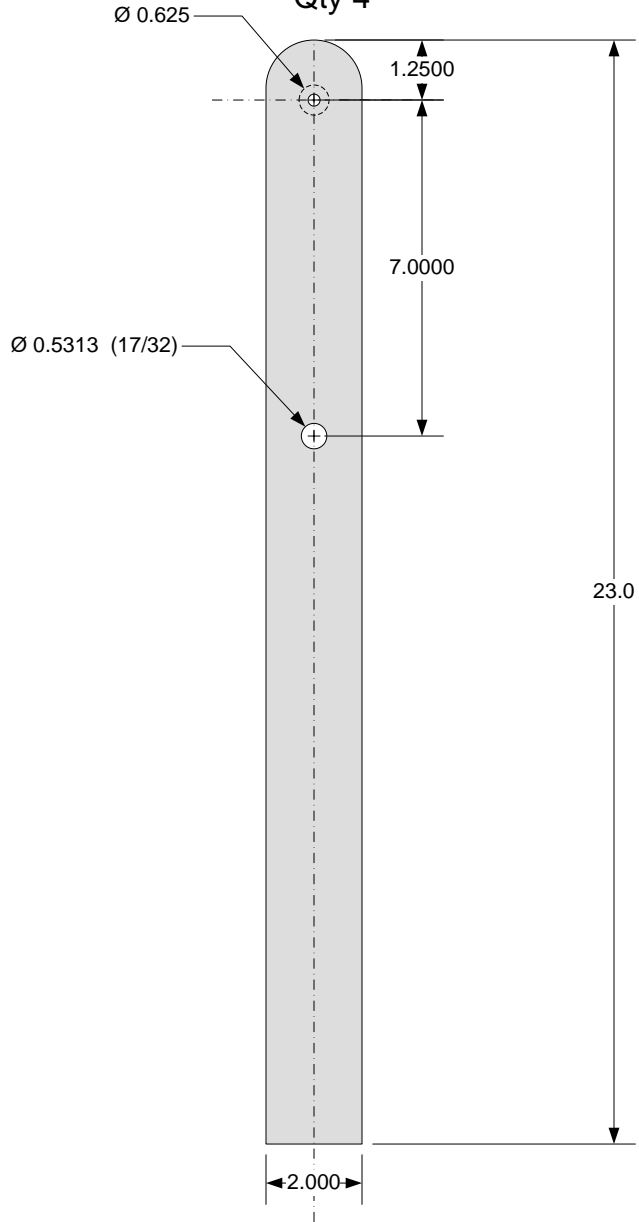


Optional Doubler  
(2 per plate)

Tensile Strength =  $0.9375 * 2 * 0.375 * 80000 = 56,250$  lbs

3/8 1x19 Wire Break Load = 14,434 lbs

Forward & Aft Lowers  
Chainplate  
1/4" 316 SS  
Qty 4



Optional Doubler  
(2 per plate)

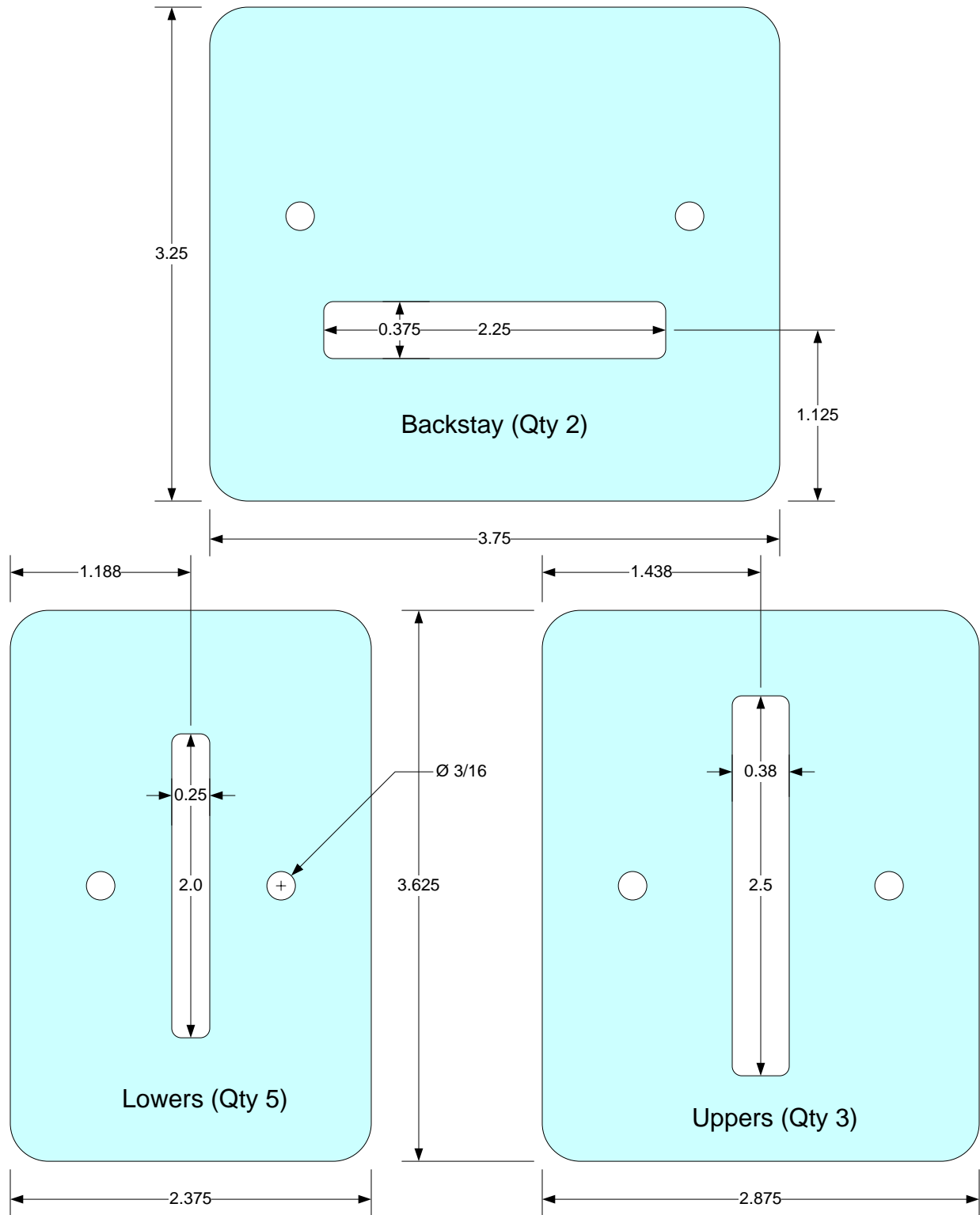
Tensile Strength =  $0.6875 * 2 * .25 * 80000 = 27,500$  lbs

5/16 1x19 Wire Break Load = 10,229 lbs

S/V BEATRIX - KELLY-PETERSON 44 #286 (1980)

TITLE				PAGE
Chainplates - Intermediates & Lowers				3 OF 10
REV.	DESCRIPTION	DATE	BY	Chainplates.vsd
A		7/14/2007	JMS	Scale: 1/4 : 1

**CHAINPLATE COVERS**  
**MATERIAL: 3/4" Starboard or UHMW**  
**(4" x 30" stock)**



S/V BEATRIX - KELLY-PETERSON 44 #286 (1980)

TITLE <b>Chainplates - Covers</b>				PAGE 4 OF 10
REV.	DESCRIPTION	DATE	BY	Chainplates.vsd
A		7/14/2007	JMS	Scale: 1 : 1