

Doubler (2 reqd.)

Tensile Strength = $0.813 * 2 * 0.375 * 80000 = 48,750$ lbs

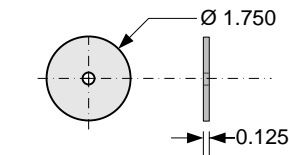
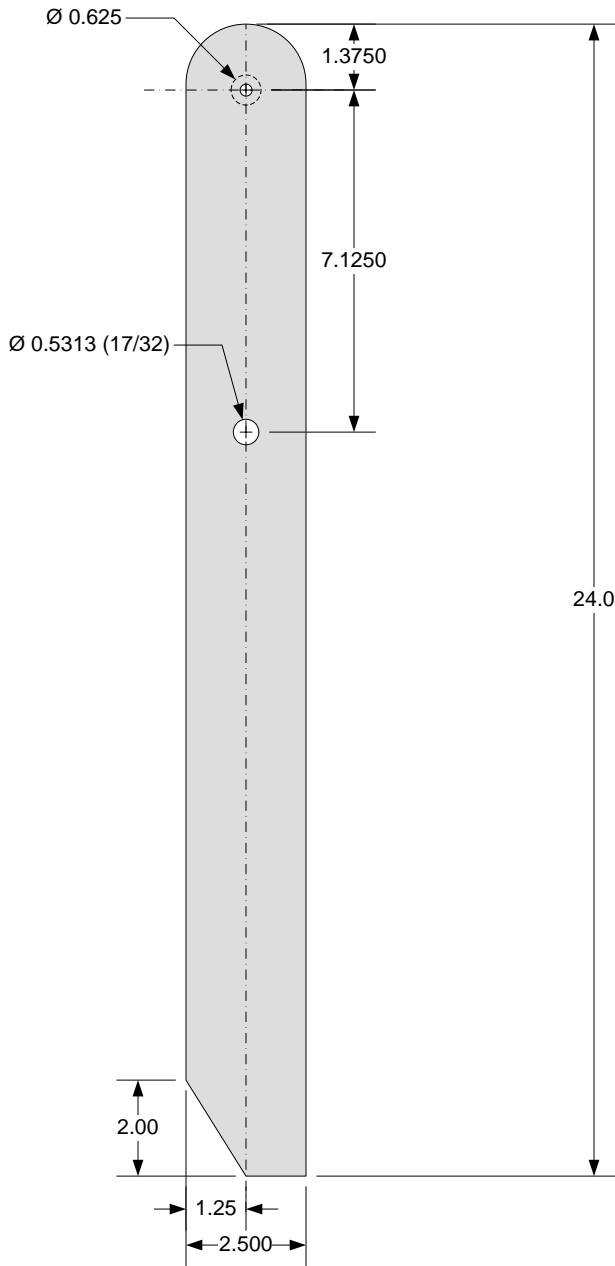
3/8 1x19 Wire Break Load = 14,434 lbs

5/16" is adequate thickness but 316 SS costs less in 3/8"

S/V BEATRIX - KELLY-PETERSON 44 #286 (1980)

TITLE				PAGE
Chainplates - Backstay				1 OF 9
REV.	DESCRIPTION	DATE	BY	Chainplates.vsd
A		6/18/2007	JMS	Scale: 1/4 : 1

Intermediate Chainplate
3/8" 316 SS
Qty 2

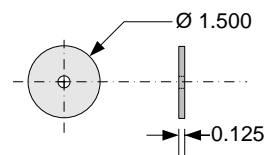
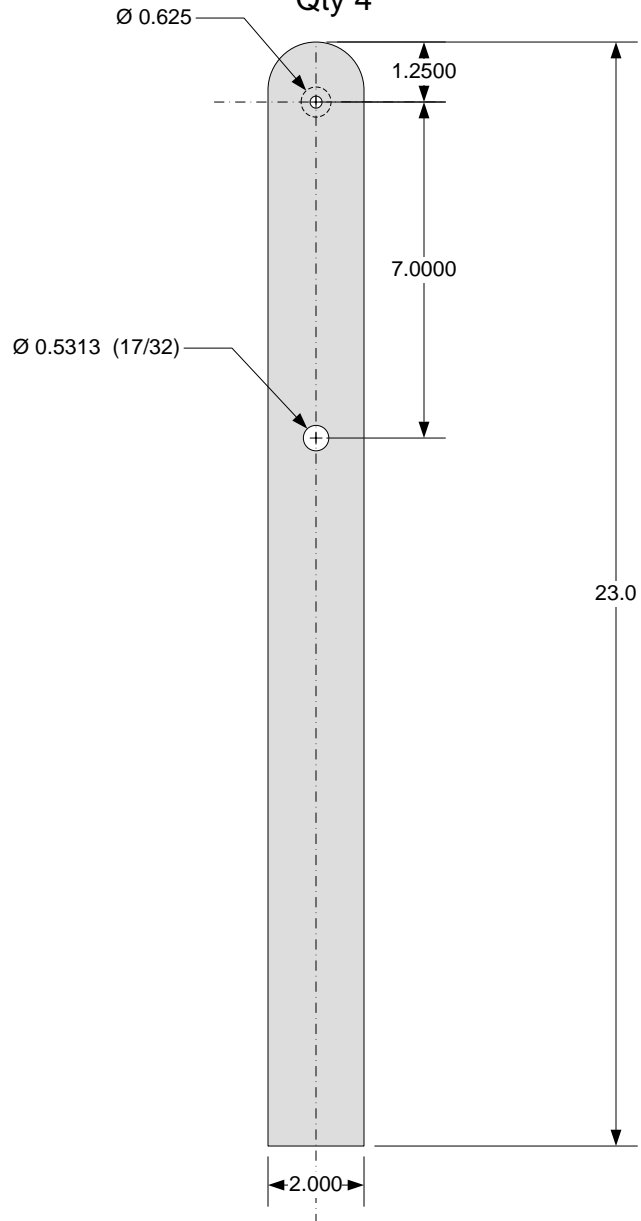


Optional Doubler
(2 per plate)

Tensile Strength = $0.9375 \times 2 \times 0.375 \times 80000 = 56,250$ lbs

3/8 1x19 Wire Break Load = 14,434 lbs

Forward & Aft Lowers
Chainplate
1/4" 316 SS
Qty 4



Optional Doubler
(2 per plate)

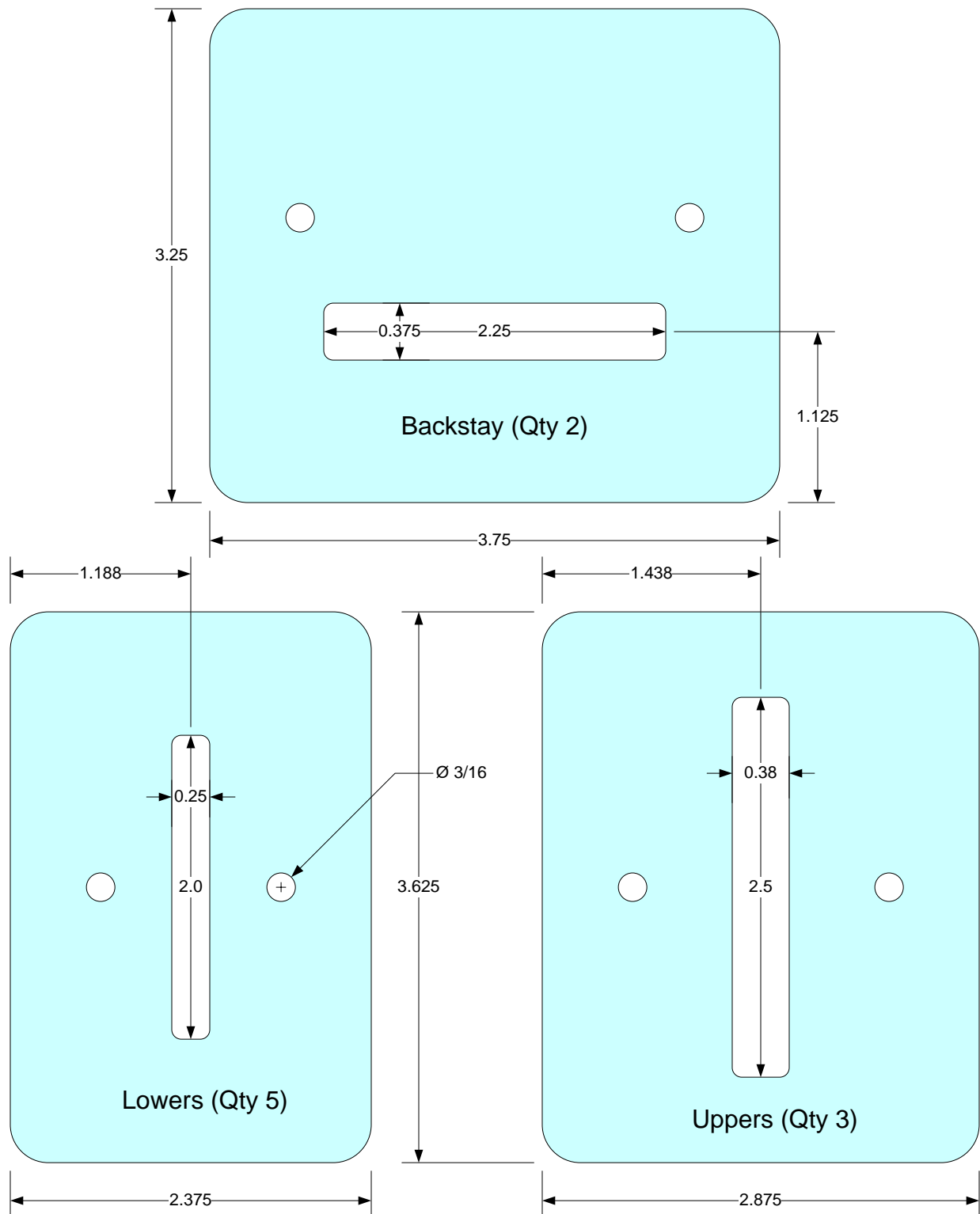
Tensile Strength = $0.6875 \times 2 \times .25 \times 80000 = 27,500$ lbs

5/16 1x19 Wire Break Load = 10,229 lbs

S/V BEATRIX - KELLY-PETERSON 44 #286 (1980)

TITLE				PAGE
Chainplates - Intermediates & Lowers				2 OF 9
REV.	DESCRIPTION	DATE	BY	Chainplates.vsd
A		6/18/2007	JMS	Scale: 1/4 : 1

CHAINPLATE COVERS
MATERIAL: ¾" Starboard or UHMW
(4" x 30" stock)



S/V BEATRIX - KELLY-PETERSON 44 #286 (1980)

TITLE				PAGE
Chainplates - Covers				3 OF 9
REV.	DESCRIPTION	DATE	BY	Chainplates.vsd
A		6/18/2007	JMS	Scale: 1 : 1

B502 STAY TENS-SM (16MM PIN)

Description Small

Pin dia. (in) 5/8

Pin-to-pin length closed (in) 23 1/8

Stroke (in) 7

Jaw width (in) 5/8

Jaw depth (in) 1 3/16

Weight - oz 158

Max. wire dia. (in) 3/8

SWL (lb) 8377

Breaking strength (lb) 16755

Use Winch handle



