

IAROANET WIFI ZONES IN FRENCH POLYNESIA

IAROANE is a WiFi Internet Network I French Polynesia. Time can be purchased online or at local representatives and most important, the time can be used in any WiFi zone. This makes it advantageous to purchase discounted minutes in a large block.

BAY OF TAI OHAE-NUKU HIVA-MARQUESAS - 8°54.8 S/ 140°05.8W



This well protected Marquesian bay will probably be your first re-provisioning and repair stop in many hundred miles !

For many years, Anne and Moetai have provided services to cruisers after their long Pacific crossings.

- Tourist and administrative information
- Mail receiving
- Transportation booking, excursions, leisure visits
- Book exchange
- Laundry, fax, Photocopy
- Ordering and delivery of spare parts for boat repairs

- Hull cleaning, mechanical repairs, welding, sail repairs
- For foreigners: translation of documents, assistance for bond procedure, immigration, visas...

TIPUTA PASS ANCHORAGE - RANGIROA - 14°58 S / 147°38 W

One of the most beautiful atoll of the Tuamotu..
You will be able to anchor right in front of our
antenna, installed at "The 6 passengers"
Diving Center.

Open all year, "6 passengers" is probably the best way to discover Tiputa Pass, a world renowned dive site !



PORT PHAETON MARINA - TAHITI - 17°44 S / 149°19.7 W

This marina is situated 45 minutes (by car) South of Papeete, in the beautiful bay of Phaeton, well known to be one of the best hurricane holes in French Polynesia, where you will find a good anchorage.

The marina has room for 30 sailboats and 20 smaller boats, and offers both inboard and outboard engine repair services.

You will also find a laundry, WC and showers, water and electricity.

Also available, shipyard, haul-out facilities (up to 8 meters, 15 tons), a gas stations, a small ship-chandler, a restaurant, and a sailing school.

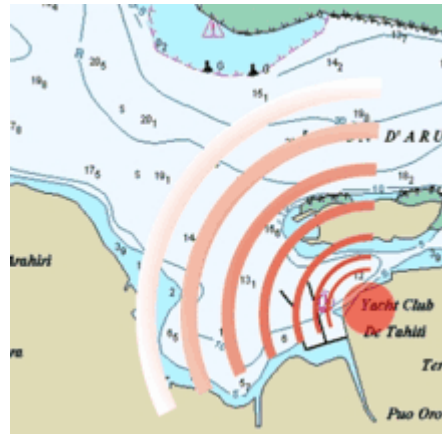


TAHITI YACHT CLUB - ARUE - 17°32.2 S / 149°34.2W

4 km North from Papeete, the Tahiti Yacht Club has 25 moorings and 4 poontoons which accomodate 160 boats.

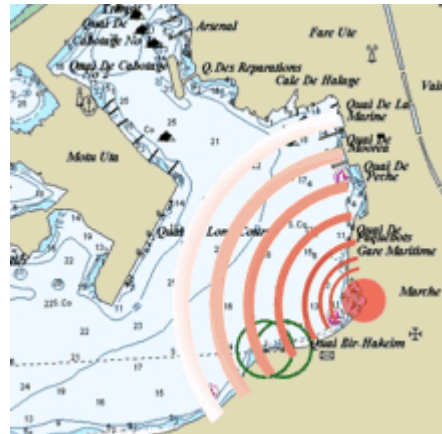
Slips are reserved for the members of the Yacht Club, but there are a few temporary ones which can be obtained for visitors.

Water, Electricity, Gas station, bar, restaurant, snack, Sailing School, Diving Center, security.



YACHT'S PEER, PAPEETE - TAHITI - 17°32.2 S / 149°34.2W

The Yacht Pier of Papeete is ideally situated in the heart of the city, close to all the shops and administration offices (customs, immigration...). Water and electricity are available, but there are no WC or showers.



MARINA TAINA - TAHITI - 17°35.2 S / 149°37 W

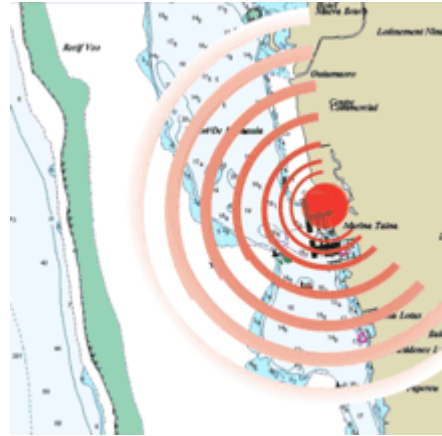
Tha Marina Taina, 9 km from Papeete, 10 minutes from the international airport, is the largest in Tahiti (500 berths).

Showers and WC are available for customers of the Marina. A laundry-mat is also available.

3 there are large anchorage zones are available, South and North of the Marina, in pristine waters, which are all covered by our signal.

There are 3 restaurants/bars, 2 diving centers, and a gas station located within the marina.

Close by there are 2 supermarkets, a pharmacy and a bus station where you can catch a bus to go to town.



[Click here to see a map of the area.](#)

MARINA VAIARE - MOOREA - 17°31.4 S / 149°46.5W

Situated in the Vaiare Bay, close to the ferry dock for Papeete, this marina has 3 pontoons for 120 boats, with 4 meters draft and is 16 meters long max.

Water and Electricity (220v), WC, showers, supermarket.

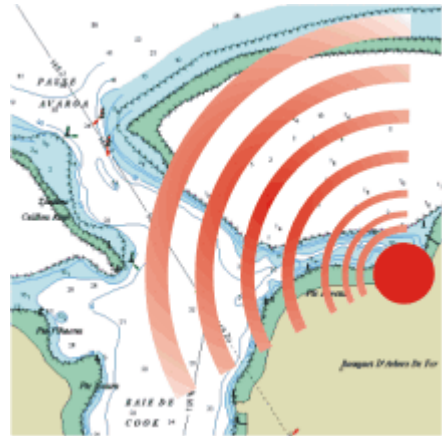
Marina closes at 8pm. The Security Guard lives here.



COOK'S BAY ANCHORAGE - MOOREA - 17°29 S / 149°48.8W

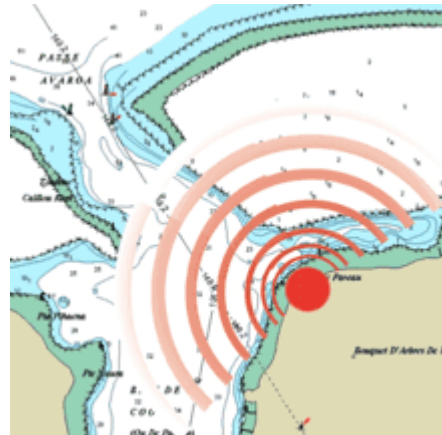
Great anchorage in the turquoise and quiet waters of Moorea.

The restaurant "le Rudy's" is open all week except Tuesday from 10.30am to 2pm, and from 5.30pm to 10pm. It is located at the East end of the anchorage.



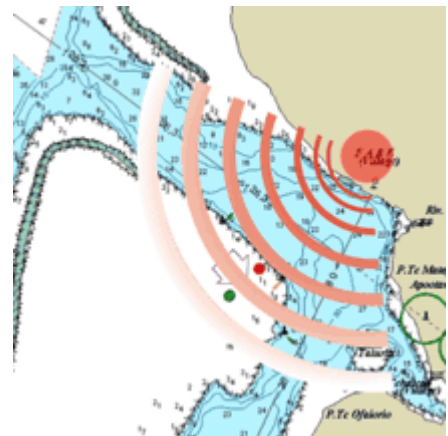
OPUNOHU'S BAY ANCHORAGE - MOOREA - 17°29.8 S / 149°51.4W

Surf whilst anchored in one of the most beautiful bays in the world : This anchorage can be entered by any size boat as it has a very large pass. Small Yachts anchor on the left hand side after entering, in 3 to 15 meters of pristine water, while larger boats can anchor in the deep water in the bay. Ashore, you will find a small grocery store 100 meters from the anchorage, on your right.



FARE ANCHORAGE - HUAHINE - 16°43 S / 151°02.2W

You can enter this beautiful anchorage by the two passes North and South of Fare. You can choose to anchor either North of the Bay, close to the beach, or next to the reef between the two passes. Of course, your wifi reception will be better if you stay close to the village.

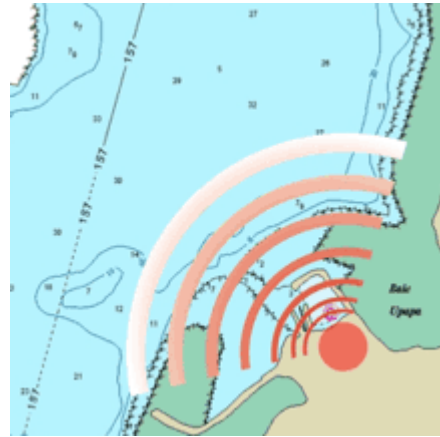


RAIATEA CARENAGE - RAIATEA - 16°44.1 S / 151°29.1W

Raiatea Carénage is a large shipyard offering all kinds of services for boat maintenance and repair. They can haul out most types of boat. You can also just haul out your own boat, and do the work yourself.

Mechanical repairs; rigging, refrigeration, fibreglass, aluminium, wood, steel and stainless steel, sail and bimini repairs. Equipment, spare parts. Gas tank refill facilities, hull painting, electricity, welding, engine repairs...

Our signal covers the shipyard and the mooring zone.

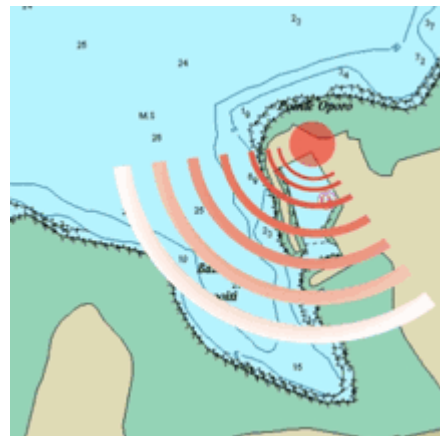


MARINA APOOITI - RAIATEA - 16°43.7 S / 151°28.7W

Marina Apooiti is the largest of the island, it has a restaurant, a ship-chandler and a slip. Tahiti Yacht Charter and Moorings have their fleet there.

Situated 5 minutes from the airport and near the Shipyards zone, the marina has 5 piers with 70 berths on the inside (till 2.4 meters draft), and room for 20 more boats on the outside.

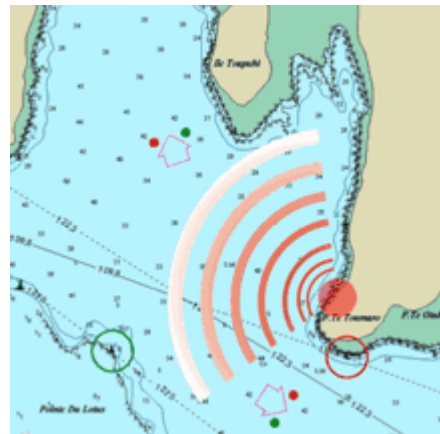
Water, Electricity (220v), showers, WC, laundry, bar, 2 restaurants, art shop, Sailing School, Diving Center, sailmaker. Security 24/24.



TARAVANA YACHT CLUB - TAHAA - 16°40.9 S / 151°29.1W

The Taravana Yacht Club is beautiful and offers yacht services: 15 mooring buoys (2000 CFP/night, free if you go to the restaurant), a pontoon (13 m) and a dock for about 15 yachts.

Water (their dock is one of the easiest watering points in the Society Islands - come and fill up your boat with clean Tahaa ground water. Fill per Boat: 1.000 cfp), Electricity (220V), laundry (1500 CFP/ 10kgs load), WC, showers and a restaurant with view on the Moorings. You can also buy home-made bread and ice cubes.



BLOODY MARY'S ANCHORAGE - BORA BORA- 16°31.6 S / 151°44.6W

Established in 1979, Bloody Mary's is Bora Bora's most famous bar and restaurant. Lunch / Dinner / Seafood Specialties.

Bloody Mary's is a popular stopover for many yachtsmen, sailors, and boaters navigating the Polynesian waters. "Our good friend Jimmy Buffet sings out across the waters, drawing guests to our tables from all the 4 corners of the world like flying fish..."

Amenities include: our dock (for short periods of time), a dingy dock area, several mooring buoys, trash facilities, a local card phone and a water refilling station. No other services or marine products are provided...



BORA BORA YACHT CLUB - 16°29.4 S / 151°45.6W

Favorite anchorage for yachties in Bora Bora since 1972. 15 mooring buoys are available in the Bay of the yacht Club. Mooring is 2000CFP per night, and includes the following services :

- access to the pontoon and to the main road
- WC and showers
- Secure dinghy dock
- Trash can (on the parking, mountain side of the road)
- Water point for yachts

