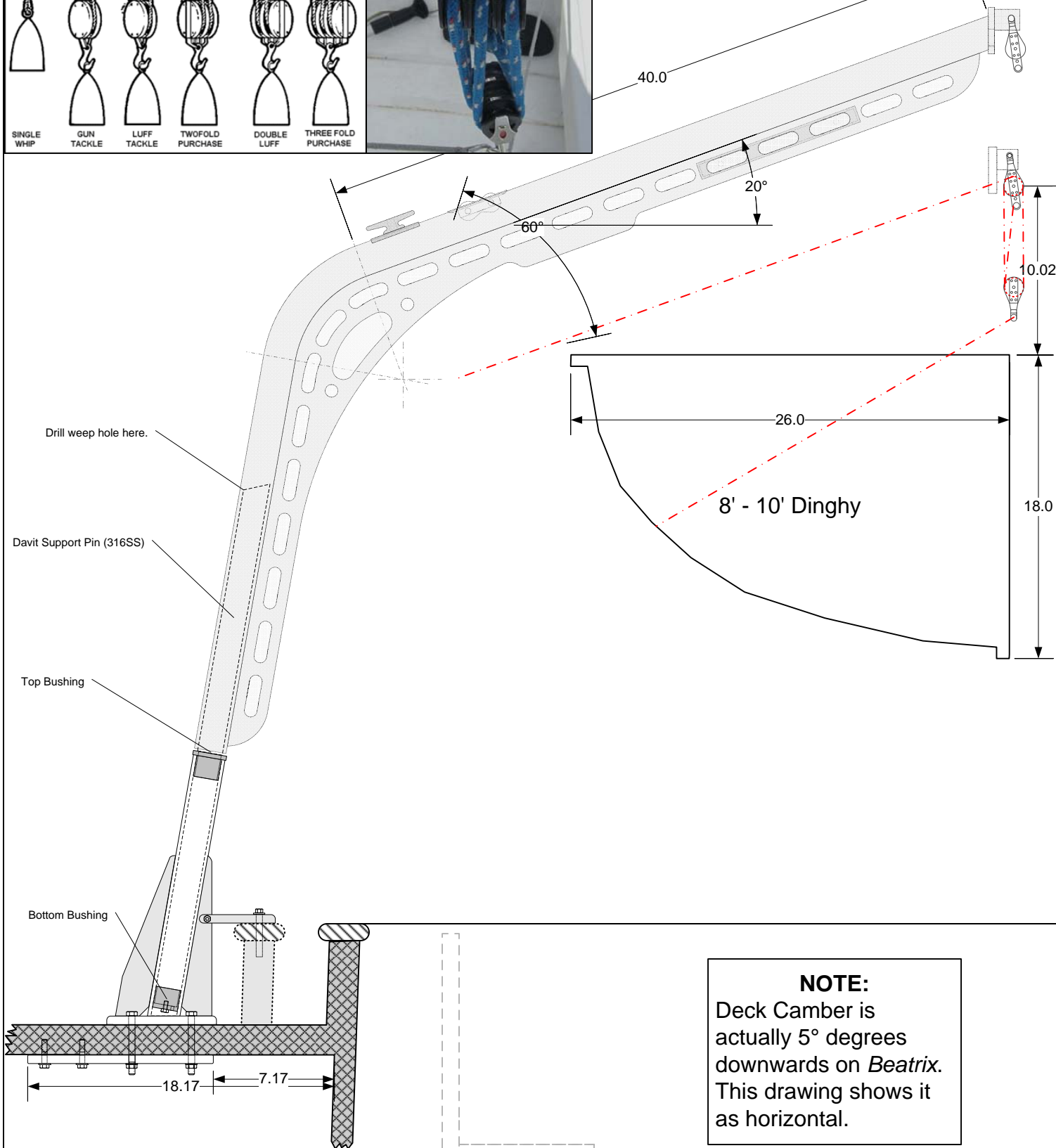
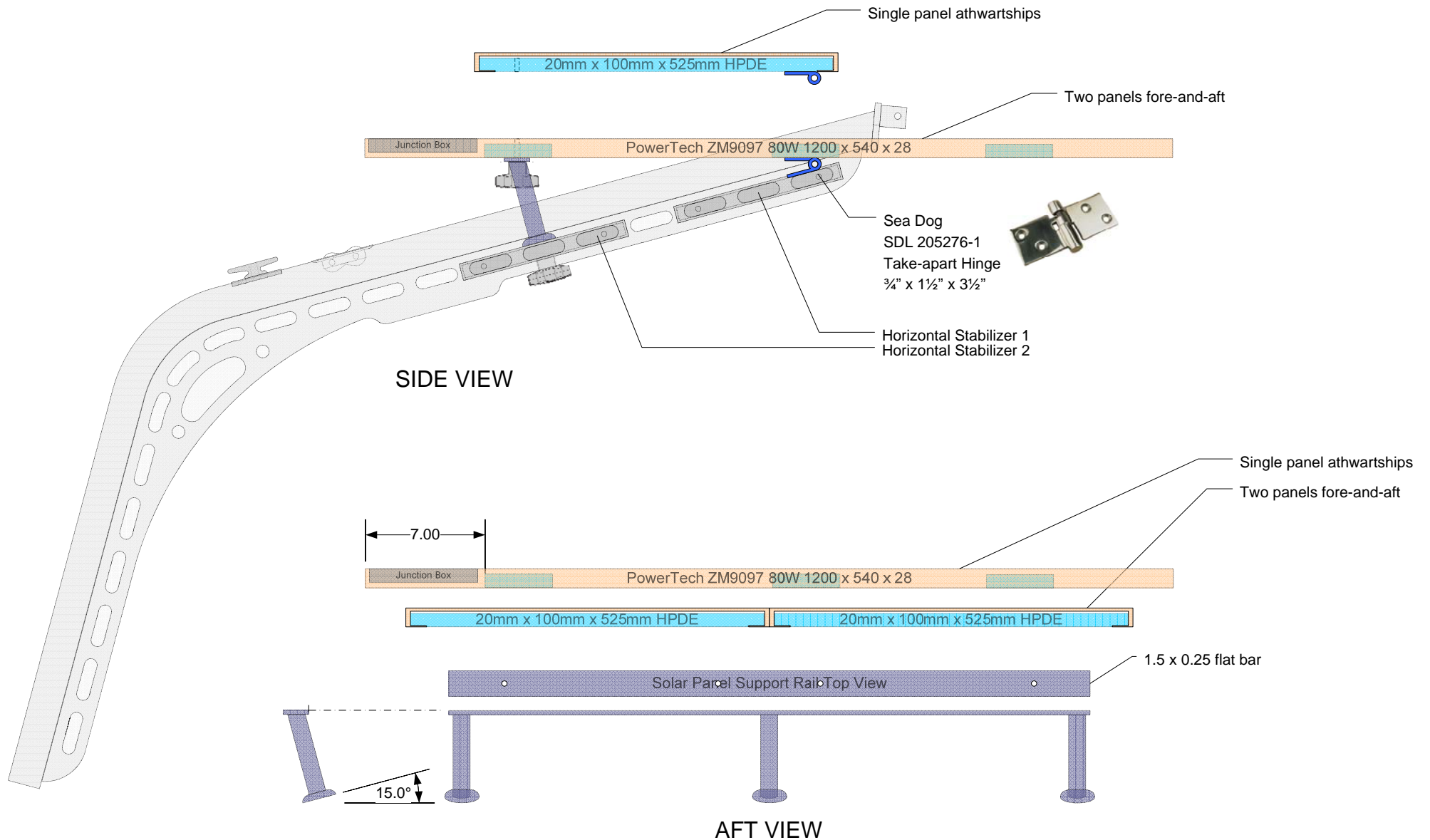


Threefold purchase. Place two triple-sheave blocks 3 feet apart, with the hooks or straps facing outboard, positioning the blocks so one is face down and the other is cheek down. Start reeving in the center sheave of one block and finish in the center sheave on the other. Then splice the standing part to the becket. This tackle offers a 6 to 1 mechanical advantage.



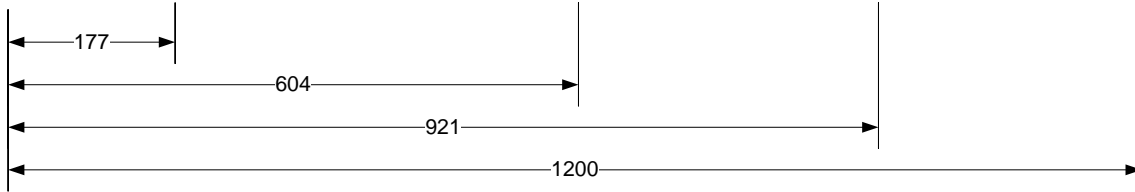
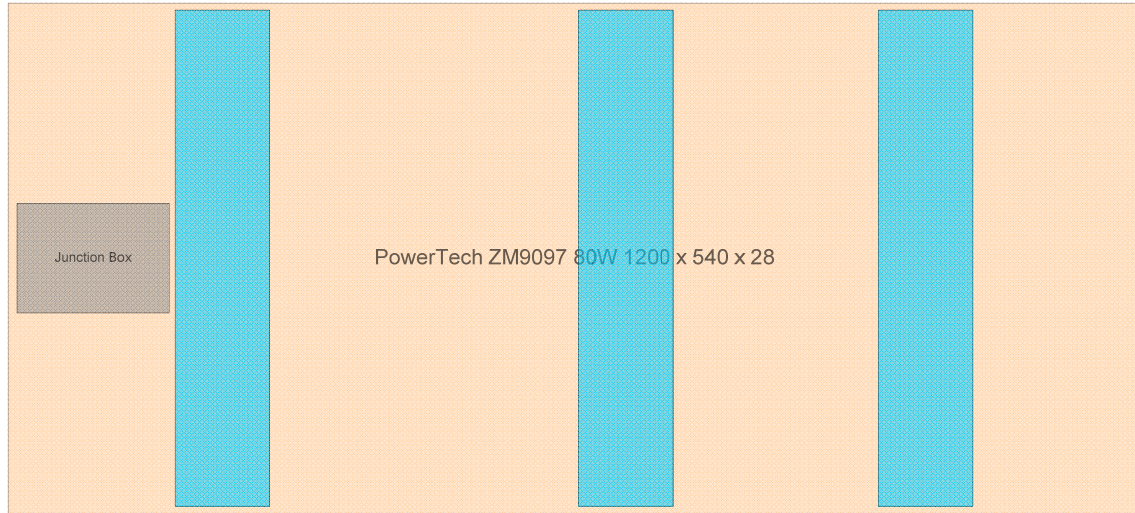
NOTE:
Deck Camber is actually 5° degrees downwards on *Beatrix*. This drawing shows it as horizontal.

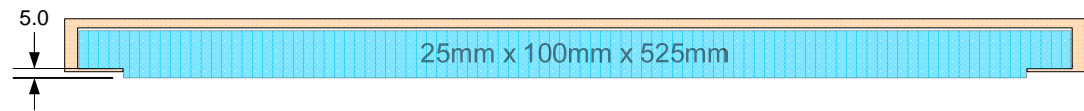
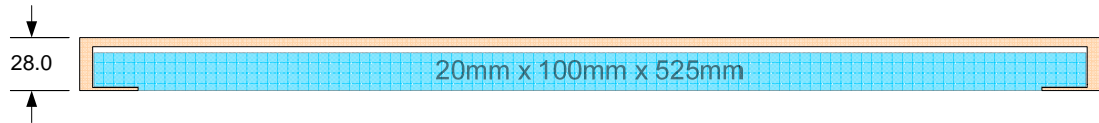


NOTE:

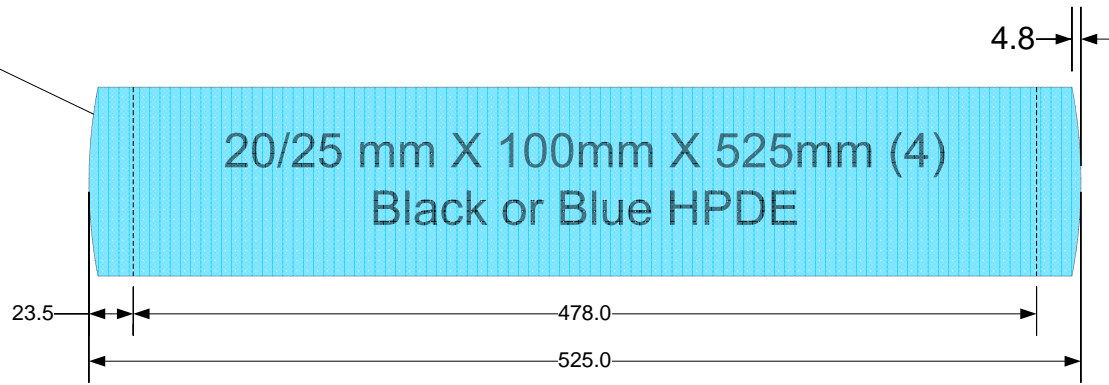
Deck Camber is actually 5° downwards on *Beatrix*. This drawing is adjusted for this camber to provide a level solar panel. The solar panel is level at 15° to the Horizontal Stabilizer.

S/V <i>BEATRIX</i> - KELLY-PETERSON 44 #286 (1980)	TITLE Removable Davits - Solar Panel Placement Worksheet	REV H	SCALE 1: 8	PAGE 2 OF 28	DATE 5/03/2014	DRAWN BY JEFF STANDER
---	---	----------	---------------	-----------------	-------------------	--------------------------

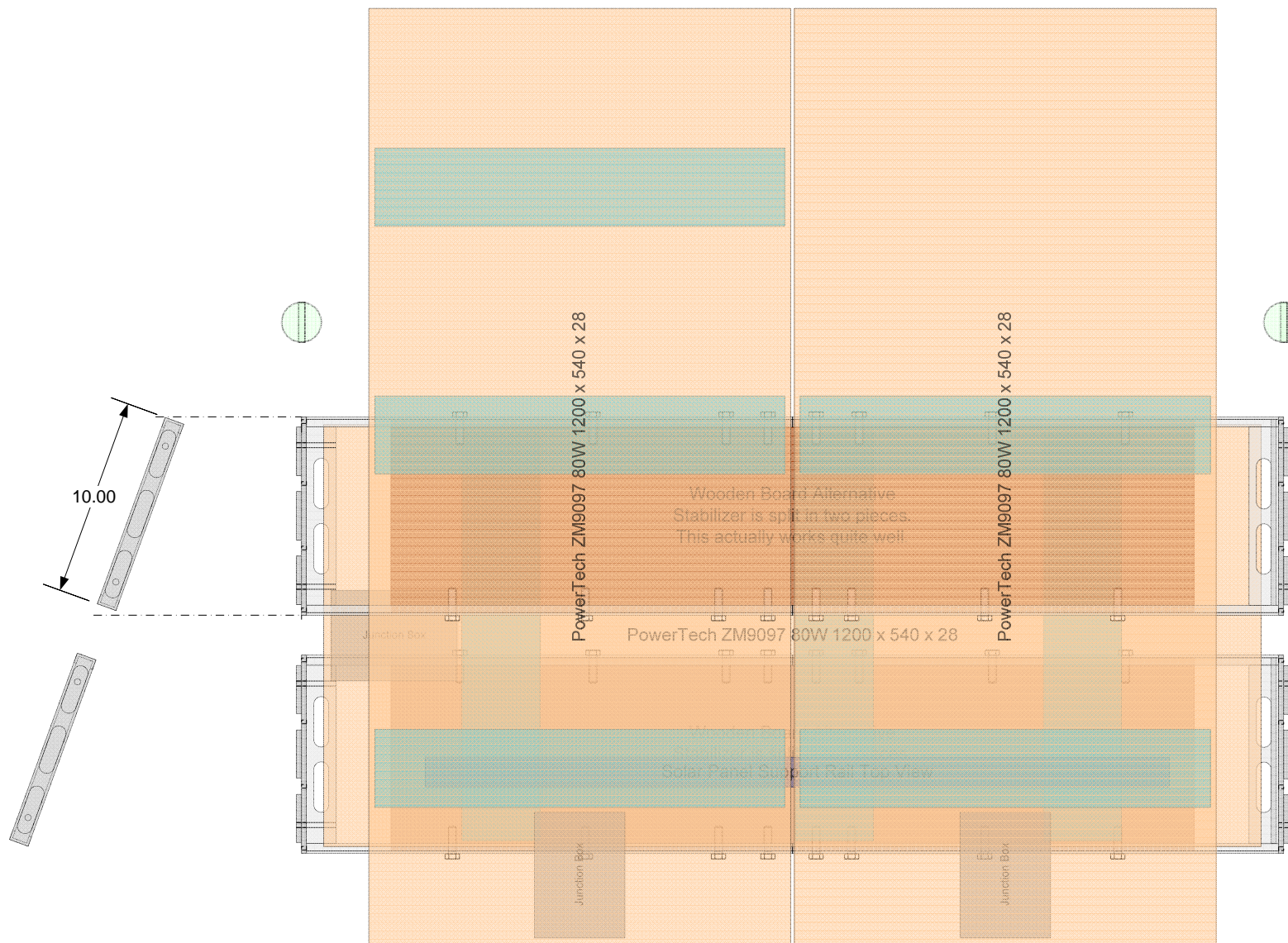




Curvature at ends
allows piece to be
rotated in place



S/V BEATRIX - KELLY-PETERSON 44 #286 (1980)	TITLE Removable Davits - 80W Solar HPDE Inserts Detail	REV H	SCALE 1: 4	PAGE 4 OF 28	DATE 5/03/2014	UNITS mm	DRAWN BY JEFF STANDER
--	---	----------	---------------	-----------------	-------------------	-------------	--------------------------



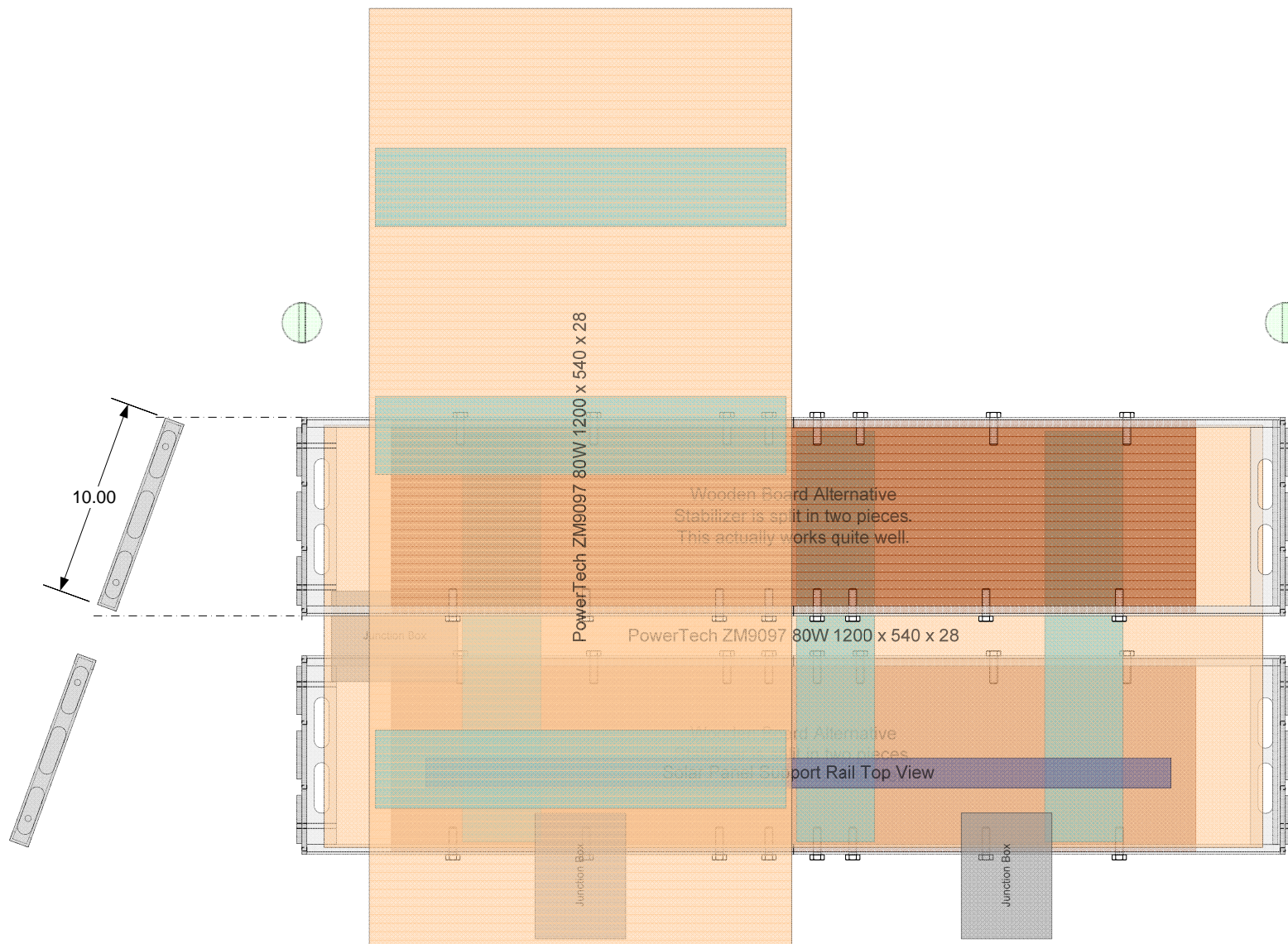
Current dimensions between gussets:

fore: 1253mm

aft: 1259mm

Parallel Dimension: 1257mm

S/V BEATRIX - KELLY-PETERSON 44 #286 (1980)	TITLE Removable Davits - Stabilizers with 80W Solar Panels (original)	REV H	SCALE 1: 8	PAGE 5 OF 28	DATE 5/03/2014	DRAWN BY JEFF STANDER
--	--	----------	---------------	-----------------	-------------------	--------------------------



Current dimensions between gussets:

fore: 1253mm

aft: 1259mm

Parallel Dimension: 1257mm

S/V BEATRIX - KELLY-PETERSON 44
#286 (1980)

TITLE

Removable Davits - Stabilizers with 80W Panel

REV

H

SCALE

1: 8

PAGE

6 OF 28

DATE

5/03/2014

DRAWN BY

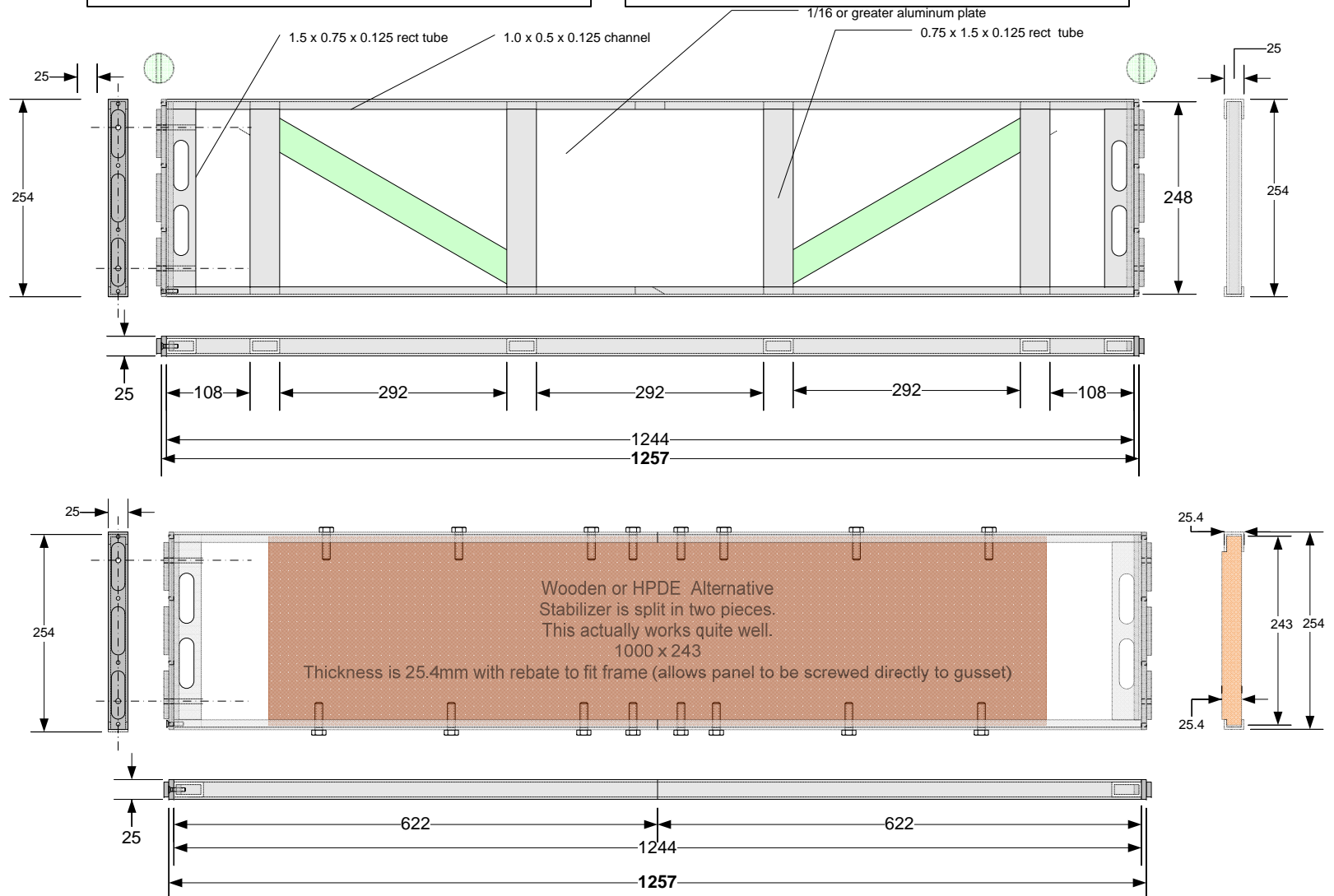
JEFF STANDER

NOTE:

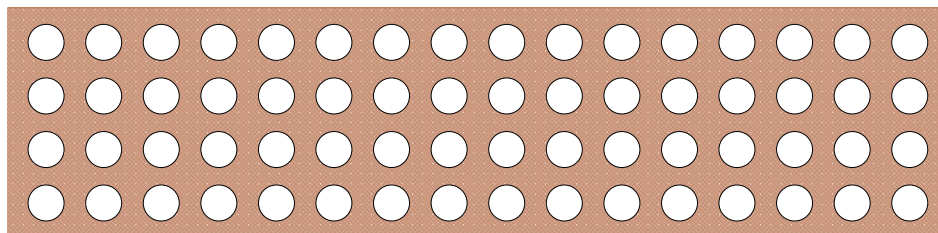
In practice the original design was not strong enough without more lateral support, thus the addition of the cross braces (green) and increased width of the internal braces (from $\frac{3}{4}$ "

NOTE:

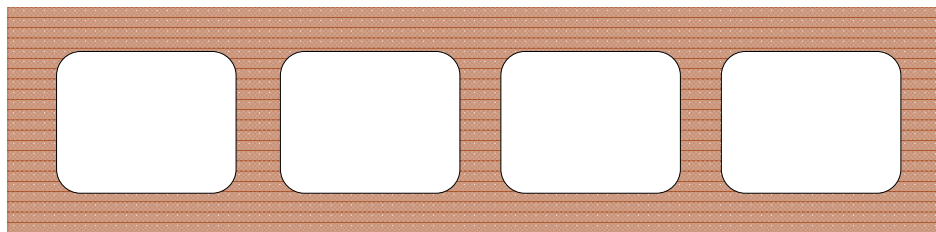
Stabilizer width depends on the stance of the davits which depends on the installation. Double-check on where the davit bases will be installed on your boat.

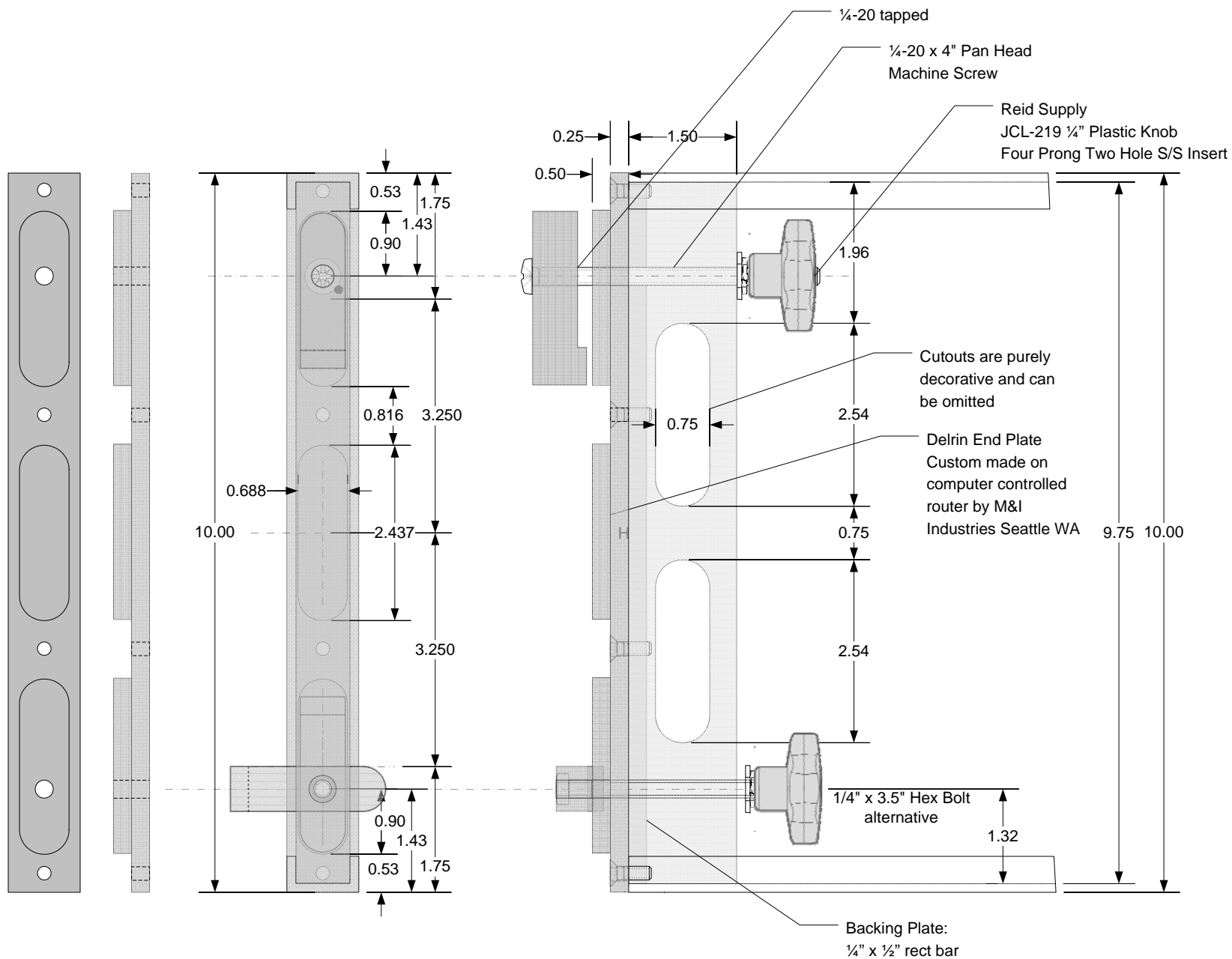


STRUCTURE	WITH PANEL	WITHOUT PANEL	DELTA
ORIGINAL PLYWOOD	14.26 kg	2.86 kg	- kg
HDPE UNMODIFIED GUSSET	17.50 kg	6.13 kg	3.27 kg
HDPE MODIFIED GUSSET	15.77 kg	4.37 kg	1.51 kg
HDPE MODIFIED GUSSET	10 %	29 %	

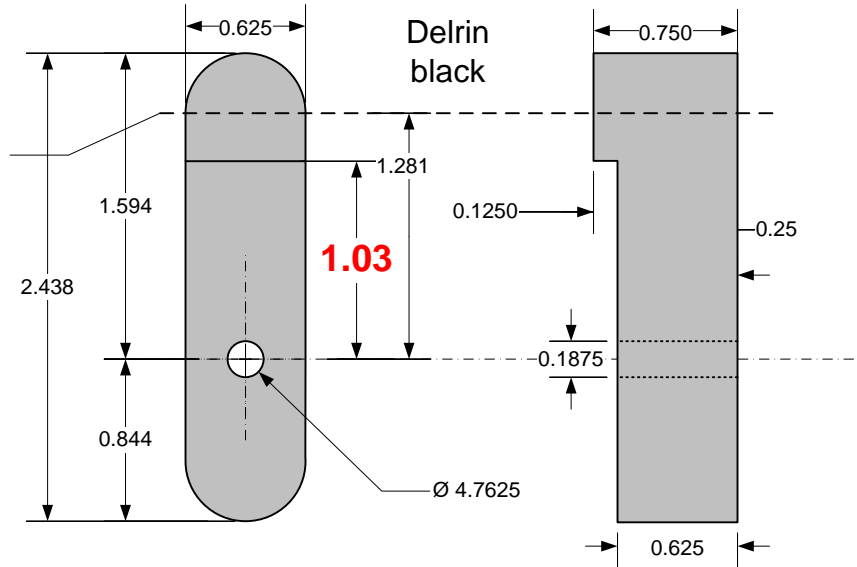


STRUCTURE	WITH PANEL	WITHOUT PANEL	DELTA
ORIGINAL PLYWOOD	14.26 kg	2.86 kg	- kg
HDPE UNMODIFIED GUSSET	17.50 kg	6.13 kg	3.27 kg
HDPE MODIFIED GUSSET	14.78 kg	3.38 kg	0.52 kg
HDPE MODIFIED GUSSET	16 %	45 %	



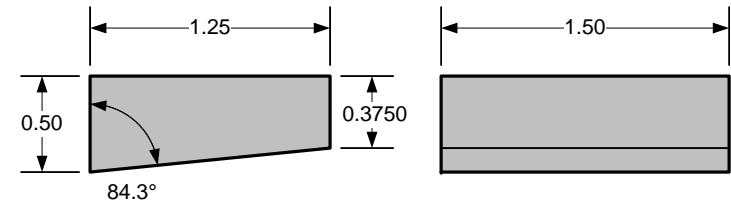


Note: clip end can optionally be truncated at the dashed line.



Black Delrin Attachment Clips (4 REQUIRED)

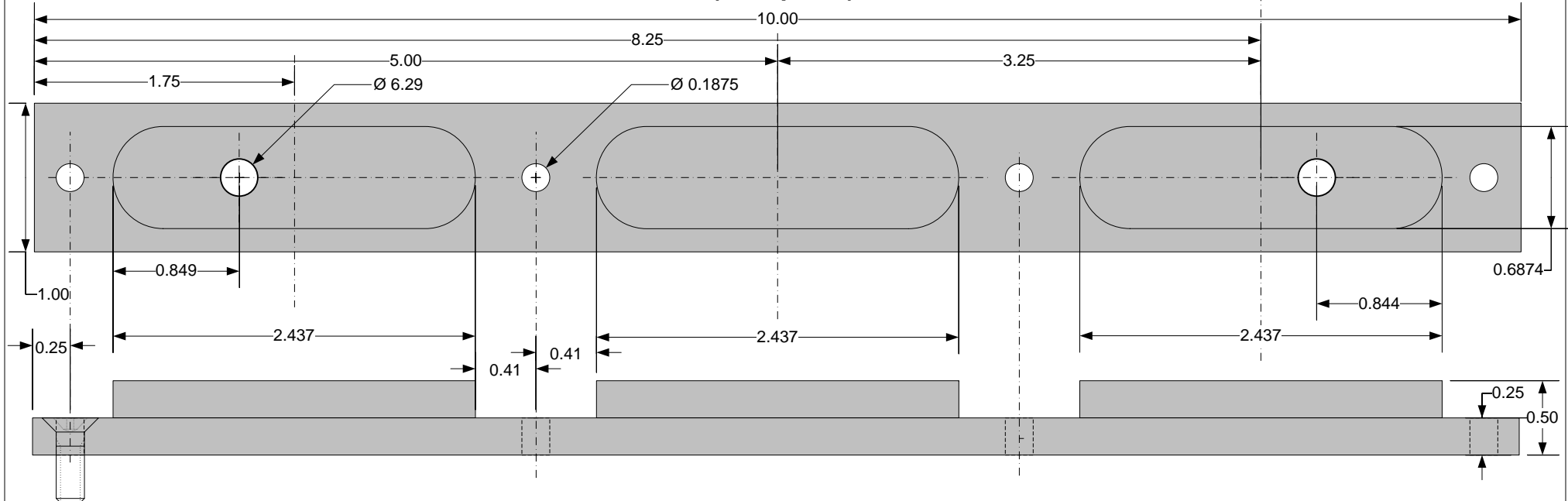
The critical dimension is in **RED**.
The hole must be drilled as square as possible.

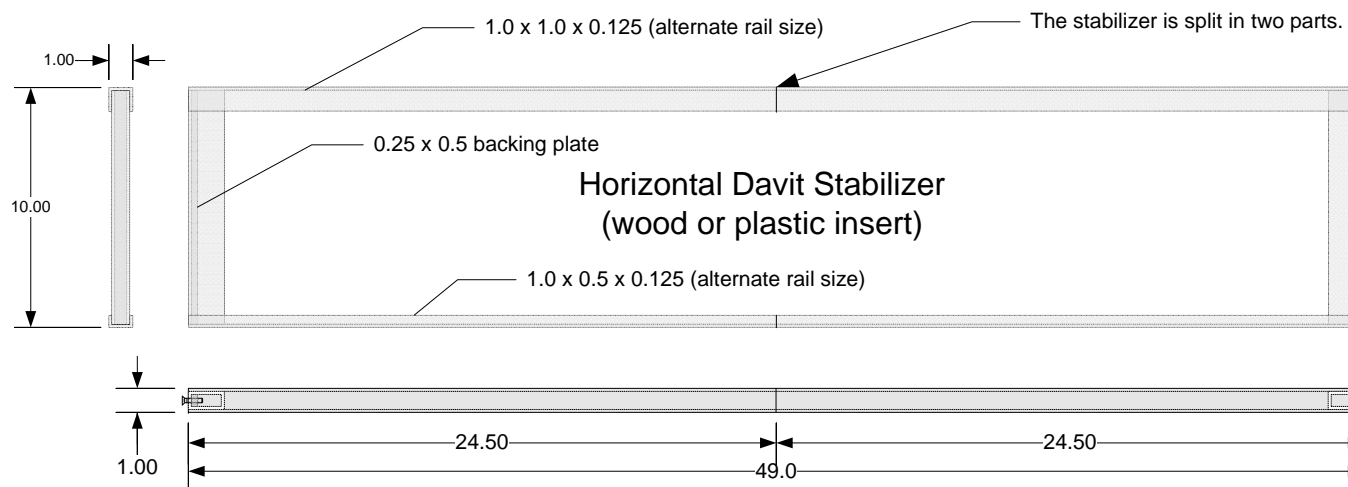
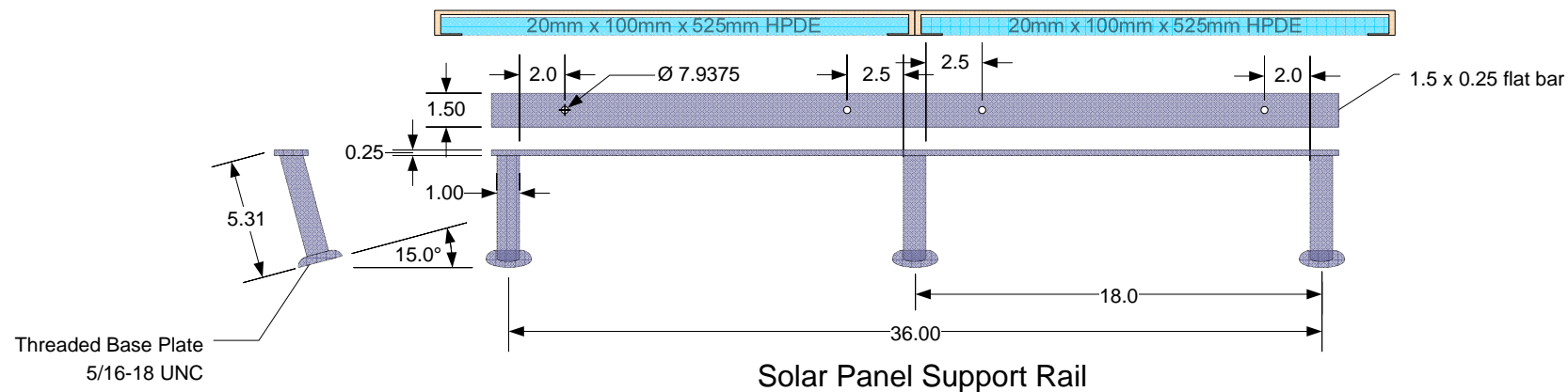


Delrin Spacers for Davit Blocks (2 reqd.)

Material: Delrin Black
(Note: for old design)

End Plates (2 Required) – Milled out of ½” Black Delrin





Materials List – not available in marine grade Al, this is 6063-T52 extruded

1. (2 x 10.0) of 0.25 x 0.5 flat bar – 0.5 lb
2. (2 x 10.0) of 0.75 x 1.5 x 0.125 rectangle tube – 1.0 lb
3. (4 x 25) of 1.0 x 0.5 x 0.125 or (4 x 25.0) of 1.0 x 1.0 x 0.125 – 1.7lb

USA SOURCING: US\$52.00 material + US\$42.00 shipping.

Shipping limit 42" max L, 72" max L + girth

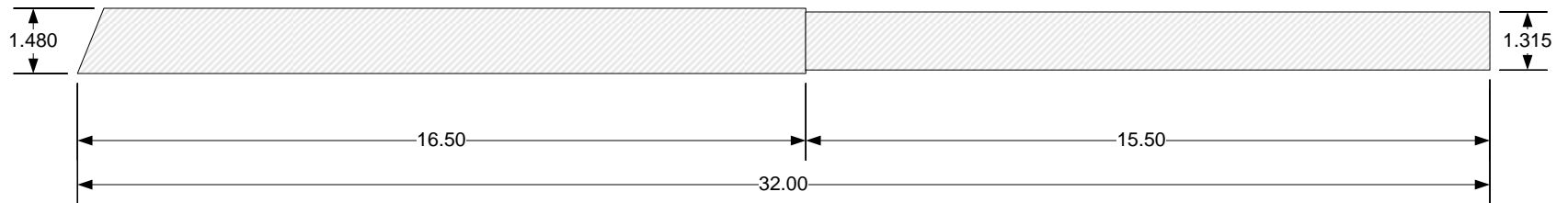
Dimensions: inches

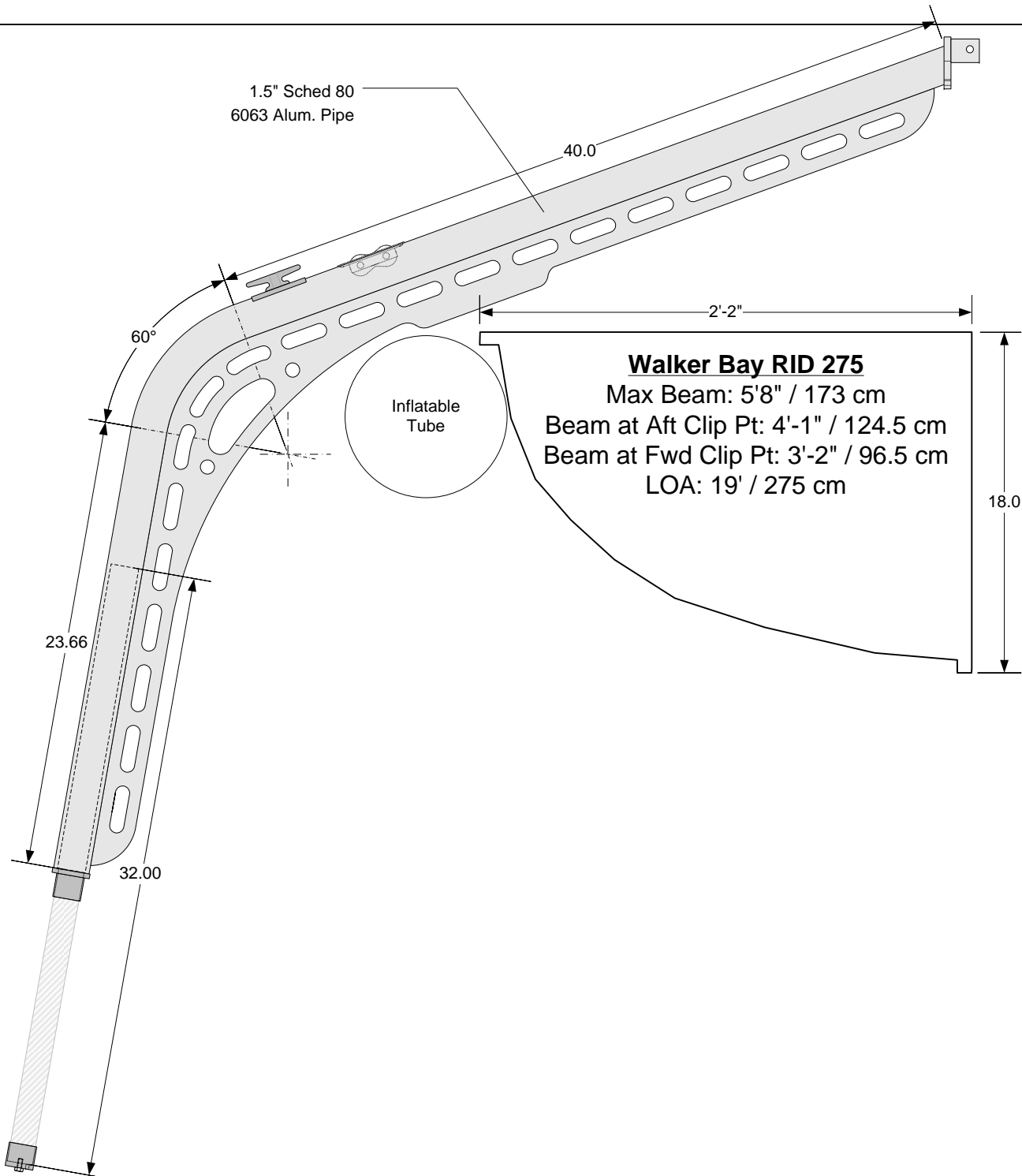
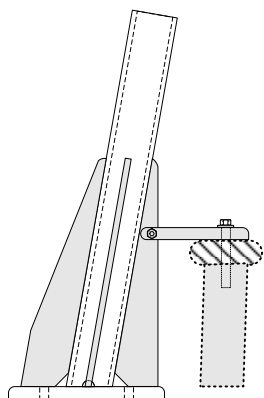
S/V BEATRIX - KELLY-PETERSON 44 #286 (1980)	TITLE Removable Davits - Stabilizer & Solar Support Shop Drawing	REV H	SCALE 1: 8	PAGE 11 OF 28	DATE 5/03/2014	DRAWN BY JEFF STANDER 0400 293 418
--	---	----------	---------------	------------------	-------------------	--



Material:

316 SS Nominal 32" X 1.5" Dia Rod, Pipe or Tube
turned to specified dimensions. Upper dimension can
be shortened if necessary. If tube, need ability to
fasten bottom bushing.





S/V *BEATRIX* - KELLY-PETERSON 44
#286 (1980)

TITLE

Removable Davits - Base and Boom Design

REV

H

SCALE

1: 8

PAGE

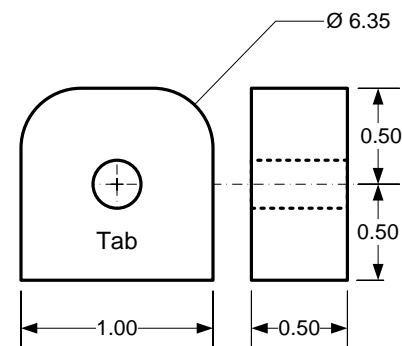
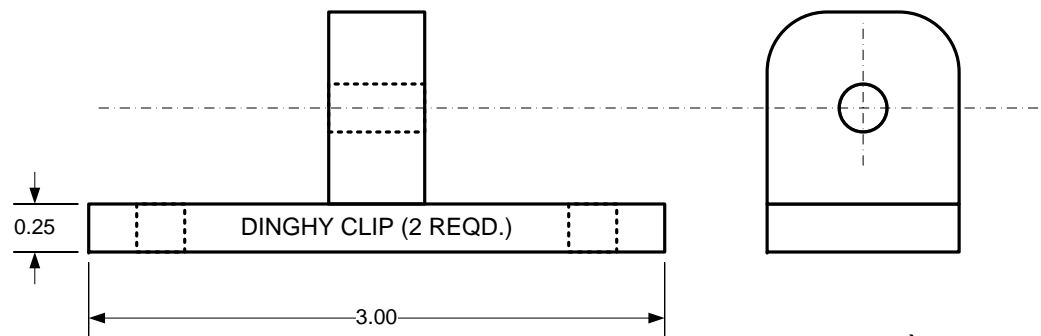
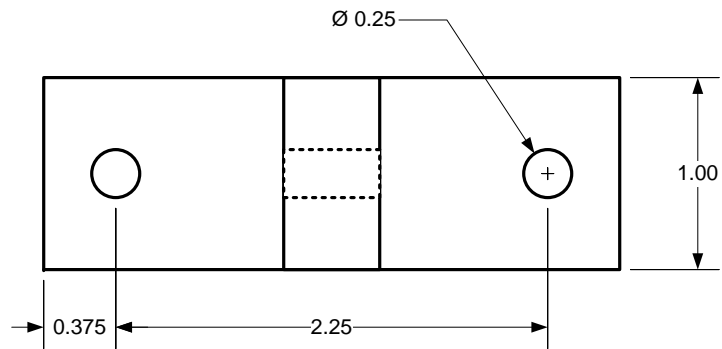
14 OF 28

DATE

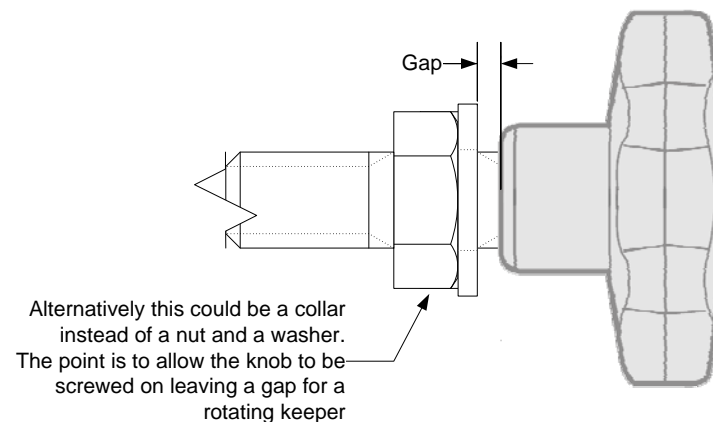
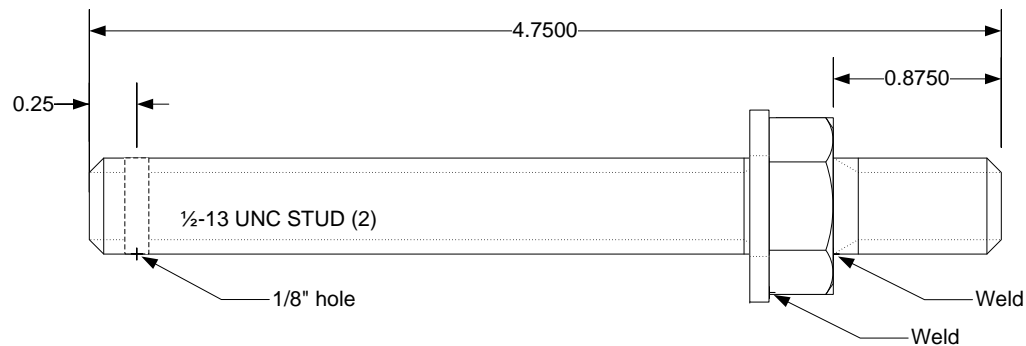
5/03/2014

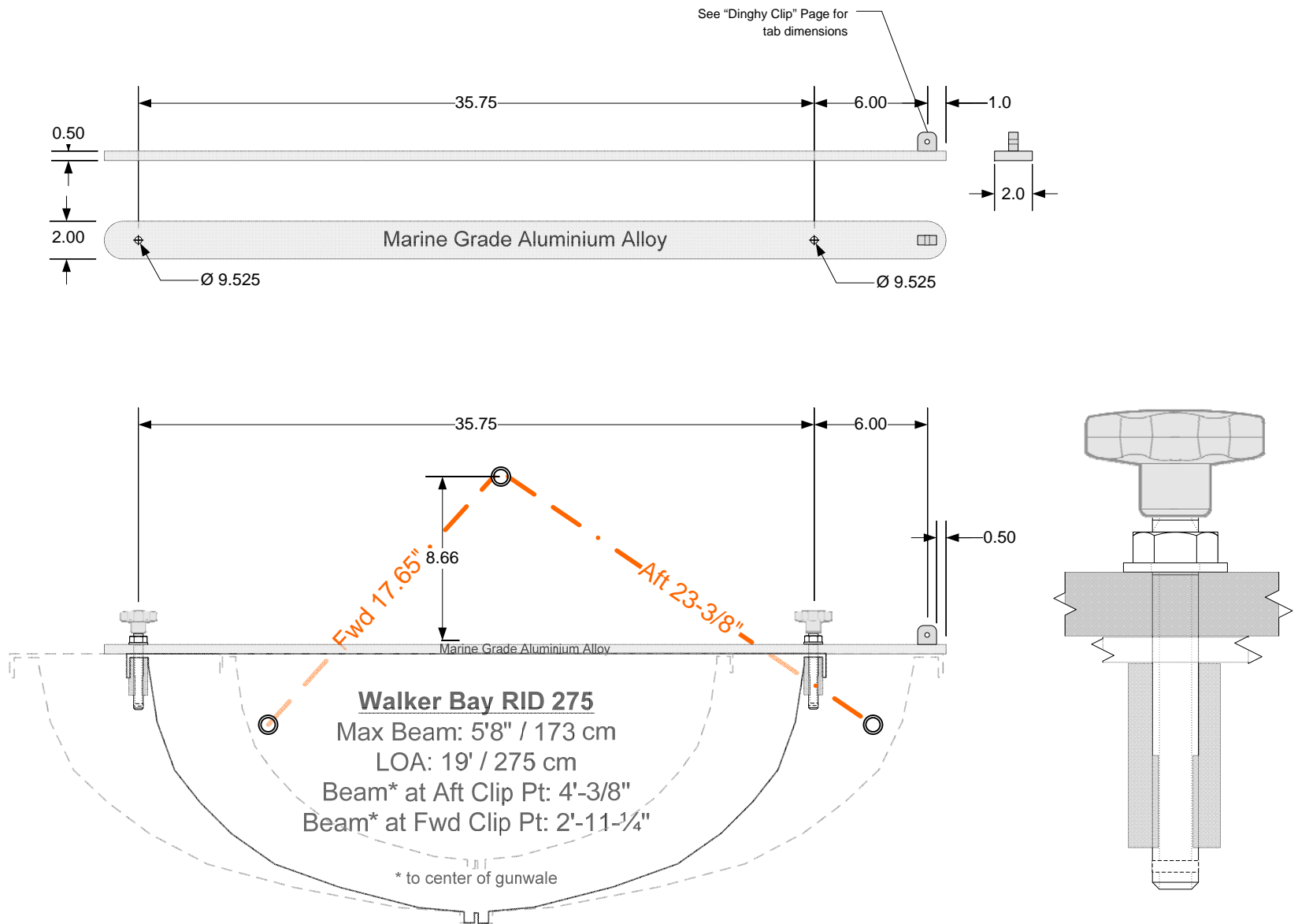
DRAWN BY

JEFF STANDER

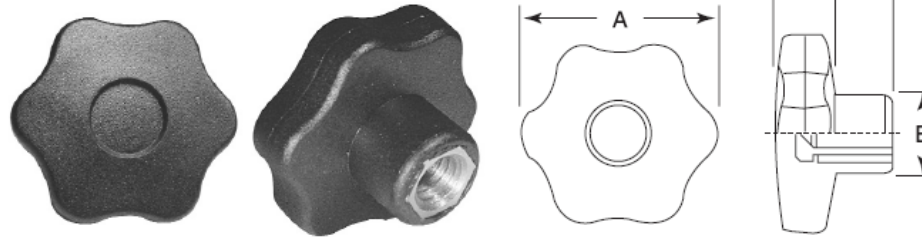


3 Tabs Required
2 for Dinghy Clips
1 for Lifting Board





Six Lobe Stainless Steel Insert

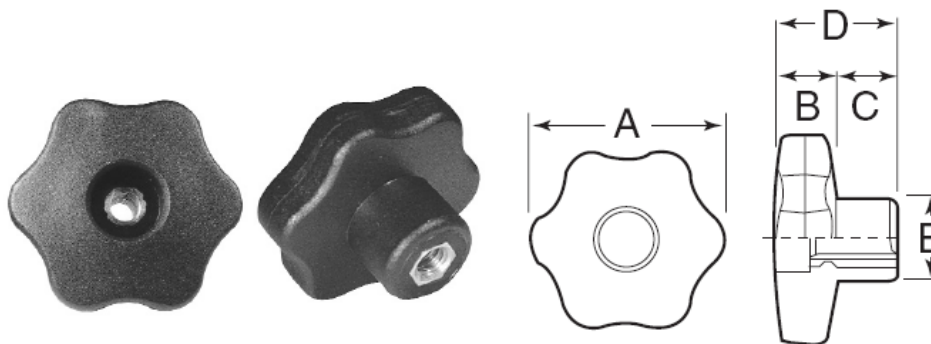


See table 32 below for additional discounts.

Cat. No.	A	B	C	D	E	Insert		Price Each 1-99
						Thread	Depth*	
JCL-166	1.18	.39	.39	.79	.59	1/4-20	.375	2.57
JCL-167	1.18	.39	.39	.79	.59	5/16-18	.469	2.93
JCL-168	1.58	.45	.49	.94	.67	1/4-20	.375	2.93
JCL-169	1.58	.45	.49	.94	.67	5/16-18	.469	3.35
JCL-171	1.58	.45	.49	.94	.67	3/8-16	.563	3.89
JCL-172	1.97	.55	.57	1.12	.79	5/16-18	.469	3.65
JCL-173	1.97	.55	.57	1.12	.79	3/8-16	.563	4.19
JCL-174	1.97	.55	.57	1.12	.79	1/2-13	.750	4.49
JCL-176	2.36	.59	.71	1.30	.94	5/16-18	.469	4.25
JCL-177	2.36	.59	.71	1.30	.94	3/8-16	.563	4.67
JCL-178	2.36	.59	.71	1.30	.94	1/2-13	.750	4.91

*Minimum

Six Lobe Thru Hole Stainless Steel Insert



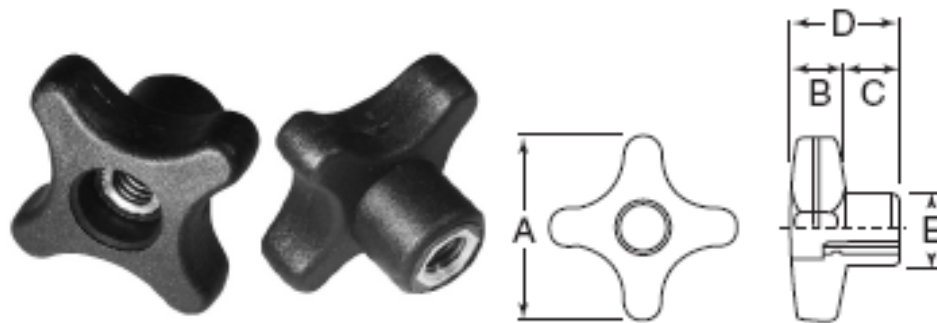
See table 32 below for additional discounts.

Cat. No.	A	B	C	D	E	Insert		Price Each 1-99
						Thread	Depth*	
JCL-179	1.18	.39	.39	.79	.59	1/4-20	.375	2.57
JCL-181	1.58	.45	.49	.94	.67	1/4-20	.375	2.93
JCL-182	1.58	.45	.49	.94	.67	5/16-18	.469	3.35
JCL-183	1.97	.55	.57	1.12	.79	5/16-18	.469	3.65
JCL-184	1.97	.55	.57	1.12	.79	3/8-16	.563	4.19
JCL-186	2.36	.59	.71	1.30	.94	3/8-16	.563	4.67
JCL-187	2.36	.59	.71	1.30	.94	1/2-13	.750	4.91

*Minimum

<http://www.reidsupply.com>

Four Prong Thru Hole Stainless Steel Insert

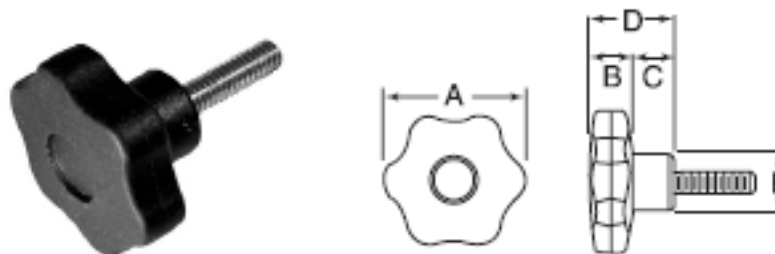


See table 32 below for additional discounts.

Cat. No.	A	B	C	D	E	Insert		Price Each 1-99
						Thread	Depth*	
JCL-218	1.26	.43	.47	.91	.59	1/4-20	.375	2.69
JCL-219	1.58	.45	.49	.95	.63	1/4-20	.375	2.81
JCL-221	1.58	.45	.49	.95	.63	5/16-18	.469	3.23
JCL-222	1.97	.55	.57	1.12	.79	5/16-18	.469	3.59
JCL-223	1.97	.55	.57	1.12	.79	3/8-16	.563	4.13
JCL-224	2.36	.59	.71	1.30	.95	3/8-16	.563	4.19
JCL-226	2.36	.59	.71	1.30	.95	1/2-13	.750	4.85

*Minimum

Six Lobe Stainless Steel Stud

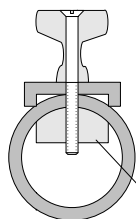
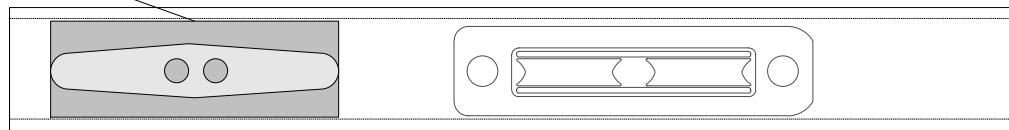


See table 32 below for additional discounts.

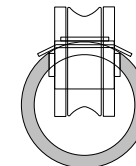
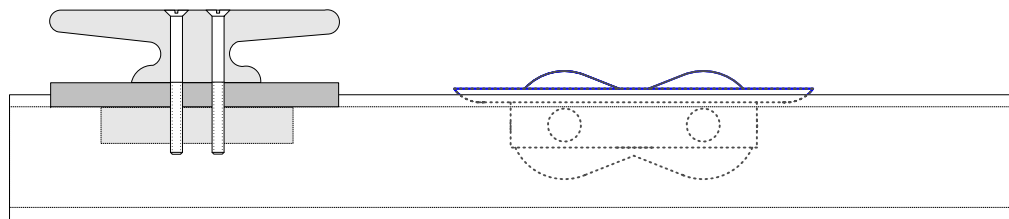
Cat. No.	A	B	C	D	E	Stud		Price Each 1-99
						Thread	Lqth.	
JCL-188	1.18	.39	.39	.79	.59	1/4-20	.51	3.33
JCL-189	1.18	.39	.39	.79	.59	1/4-20	.98	3.41
JCL-191	1.58	.45	.49	.94	.67	1/4-20	.98	3.74
JCL-192	1.58	.45	.49	.94	.67	5/16-18	.75	3.83
JCL-193	1.58	.45	.49	.94	.67	5/16-18	.98	3.88
JCL-194	1.97	.55	.57	1.12	.79	5/16-18	.98	4.22
JCL-196	1.97	.55	.57	1.12	.79	5/16-18	1.25	4.29
JCL-197	1.97	.55	.57	1.12	.79	3/8-16	.98	4.35
JCL-198	1.97	.55	.57	1.12	.79	3/8-16	1.25	4.43
JCL-199	2.36	.59	.71	1.10	.94	3/8-16	.98	4.79
JCL-201	2.36	.59	.71	1.10	.94	3/8-16	1.25	4.88
JCL-202	2.36	.59	.71	1.10	.94	1/2-13	.98	5.25
JCL-203	2.36	.59	.71	1.10	.94	1/2-13	1.25	5.38

<http://www.reidsupply.com>

Cleat Mounting Plate
1 x 1/4 x 3
Cut from 1 x 1/2 x 3/8 channel

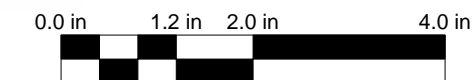


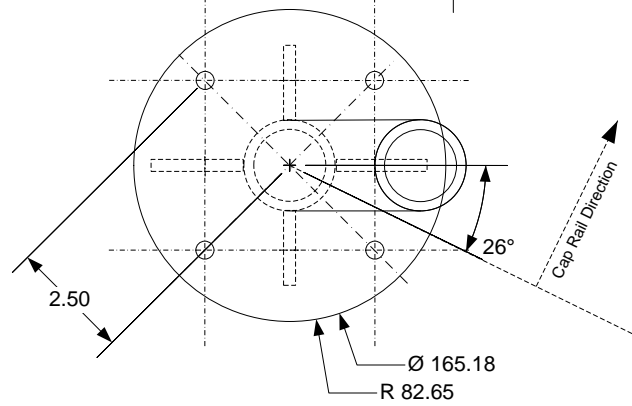
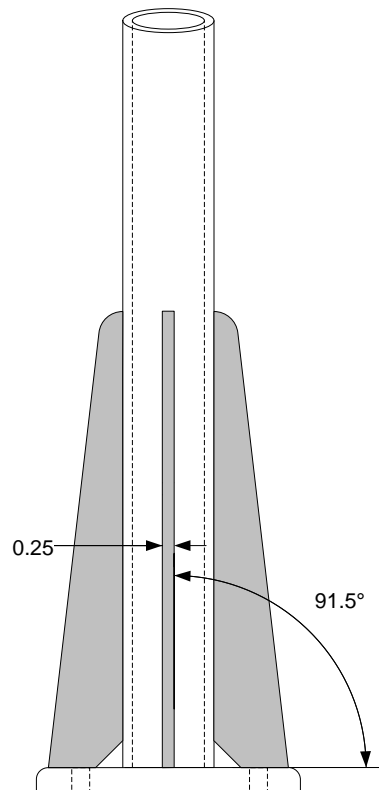
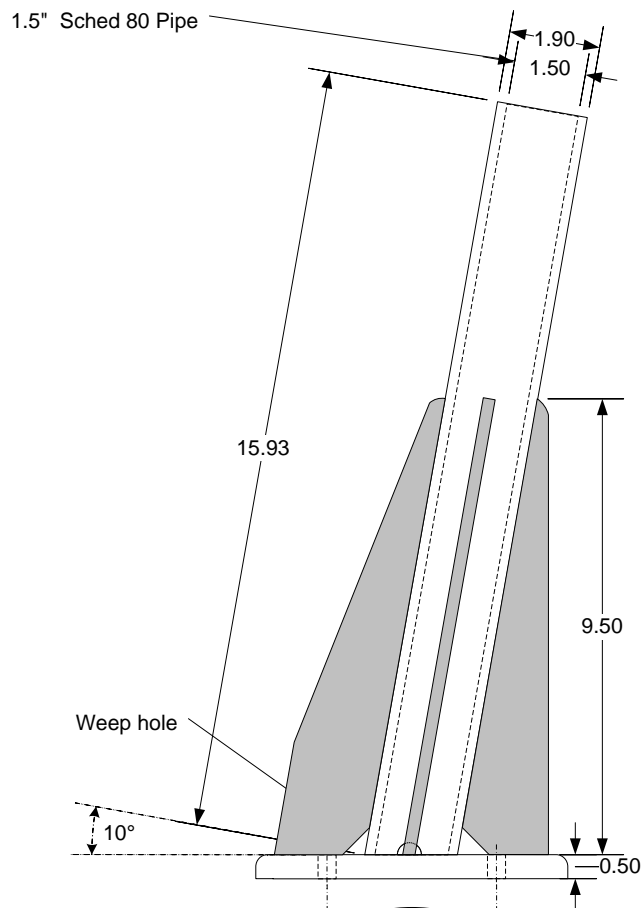
Backing Plate
2" x 3/8" x 3/4"



HARKEN 089 BLK-BULLET IN-LINE EXIT

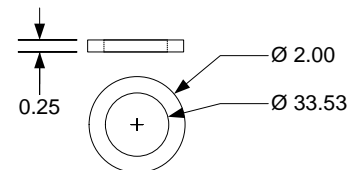
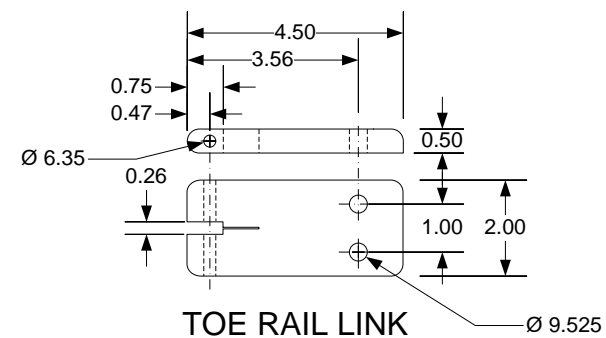
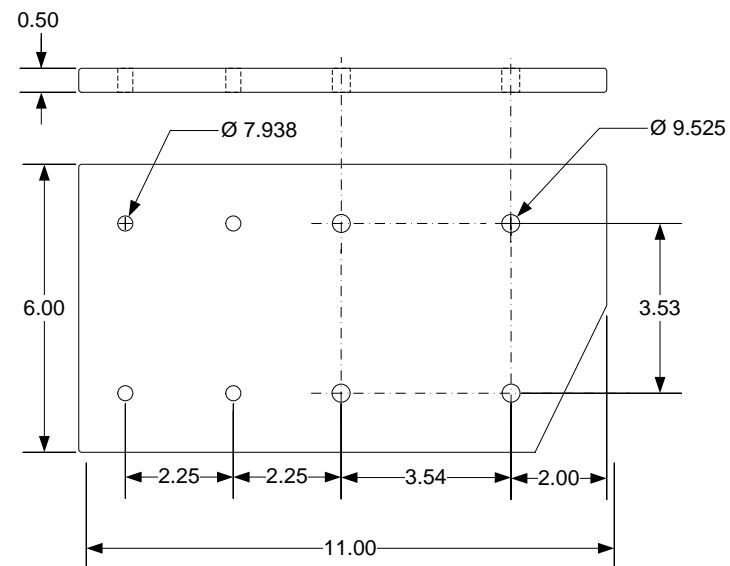
Description In-line exit*
Sheave dia. (in) 1 1/8
Length (in) 3 3/4
Weight (oz) 1 3/4
Max. line dia. (in) 5/16
Shackle pin dia. (in) -
SWL (lb) 400
Breaking strength (lb) 2000



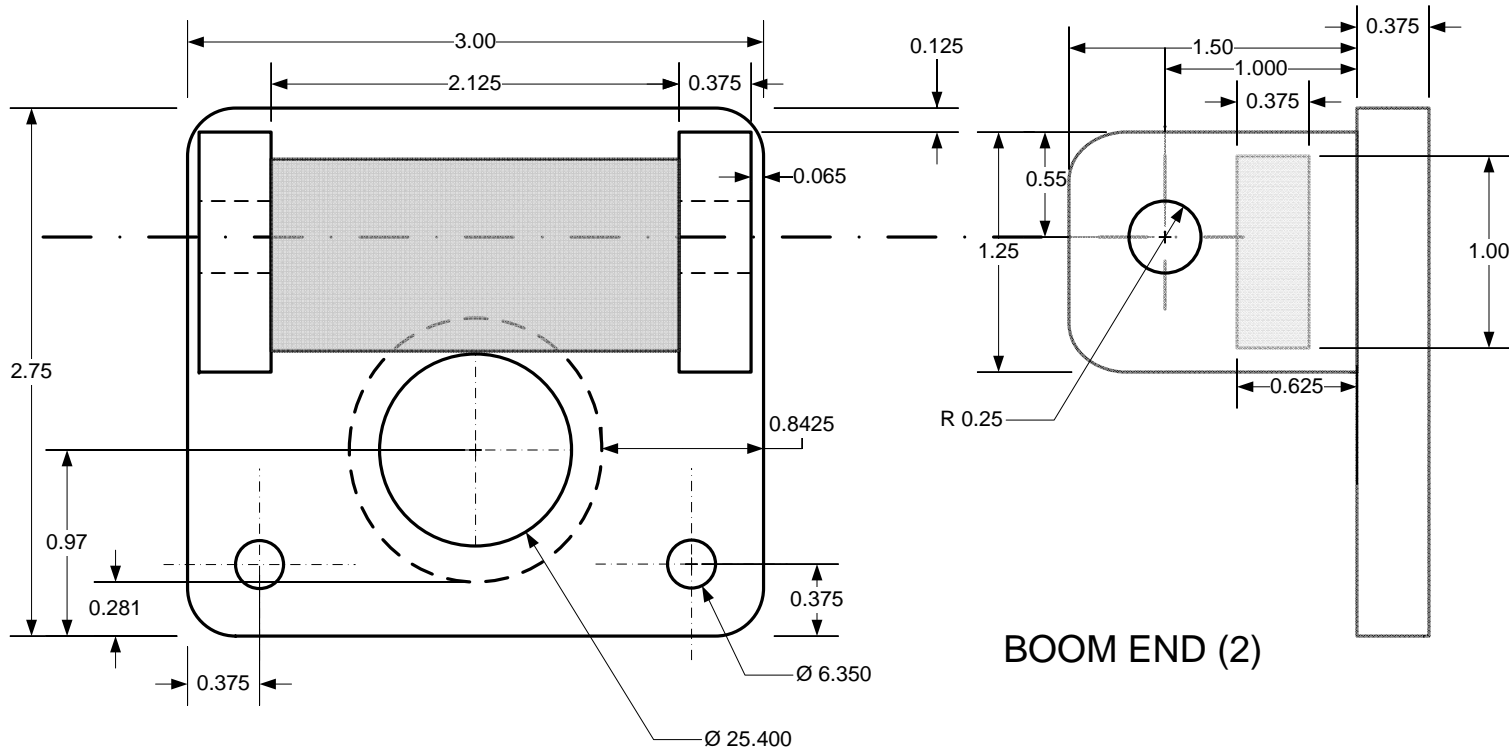


PORT DAVIT BASE

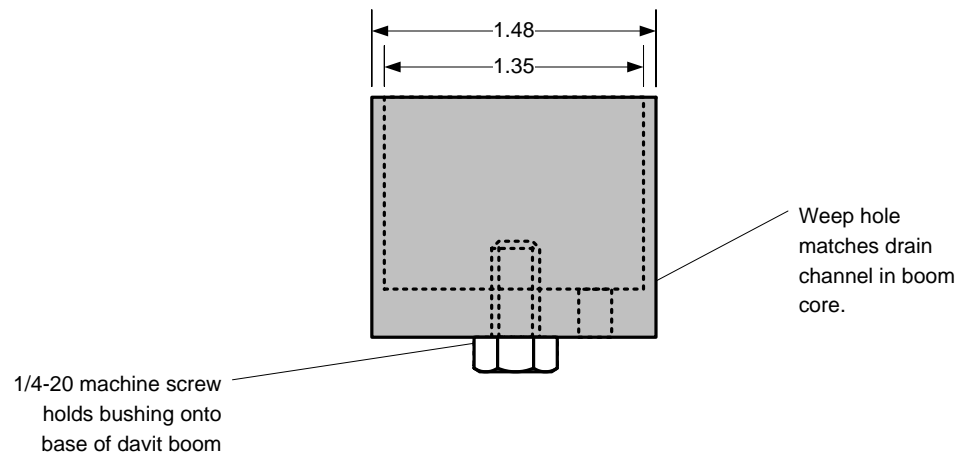
Starboard is mirror image



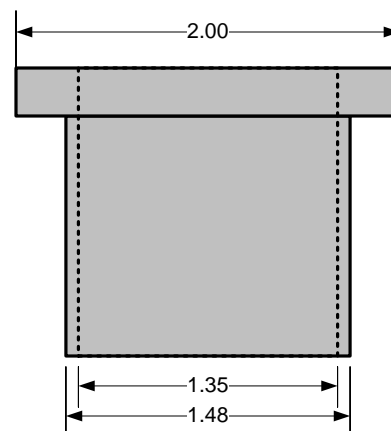
STOP COLLAR



BOOM END (2)



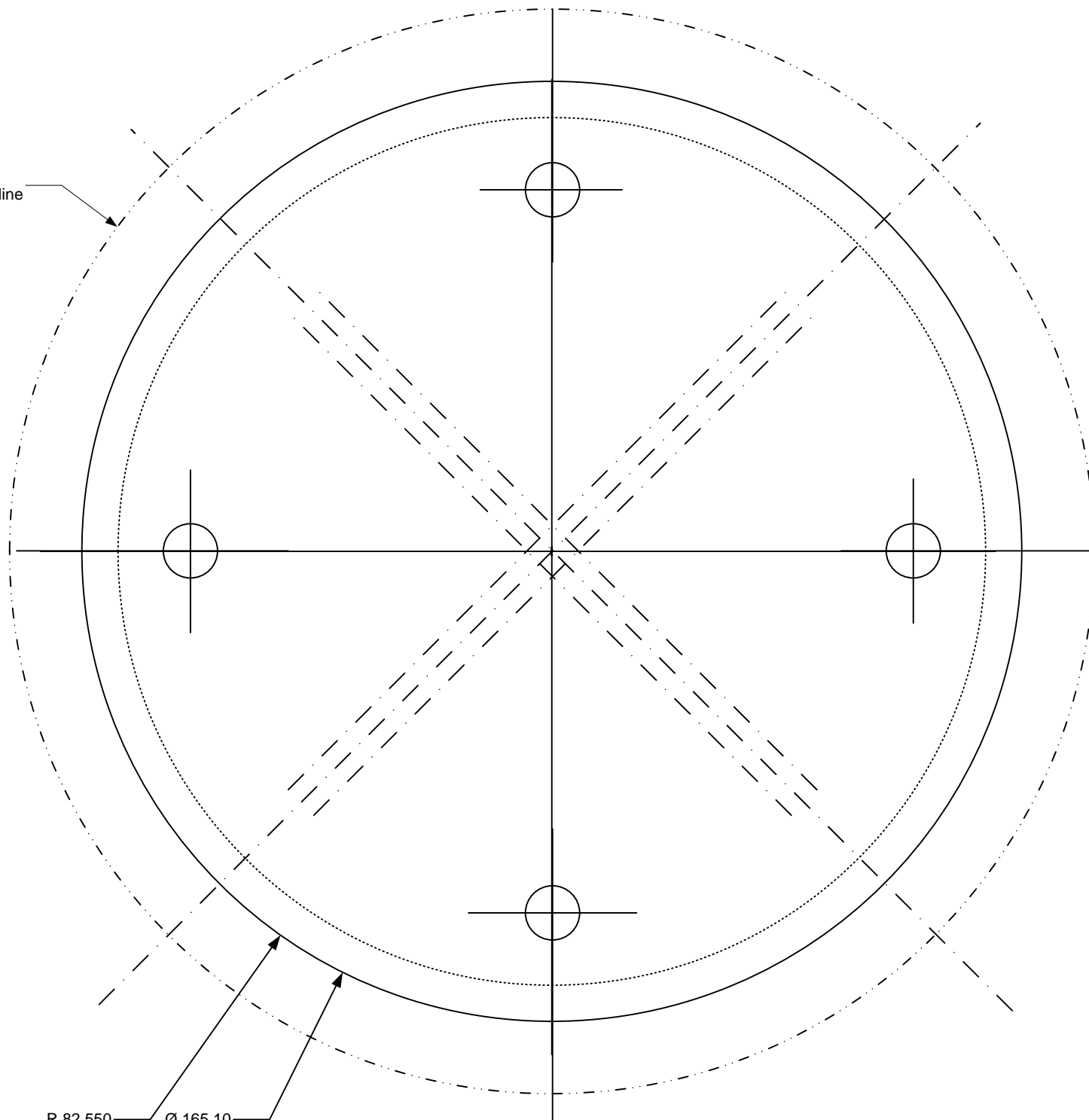
BOTTOM BUSHING (2)



TOP BUSHING (2)

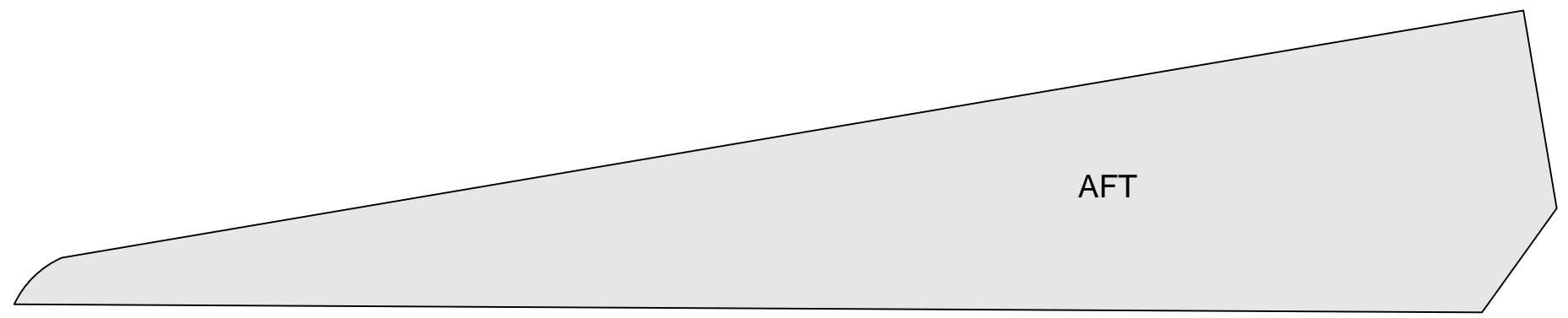
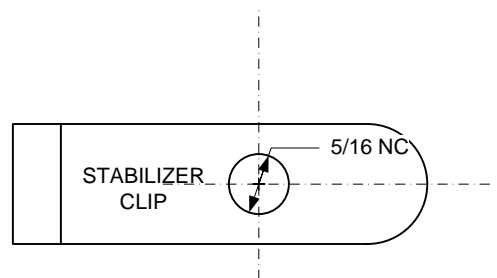
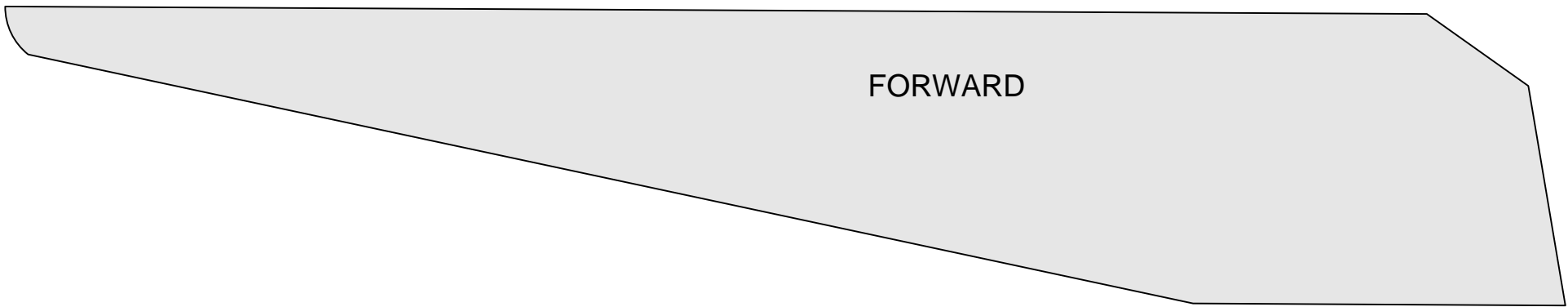
Material is black Delrin
(Acetal) or Nylon or
D-GLide

Ø 7.50
Mounting Pad Outline



R 82.550

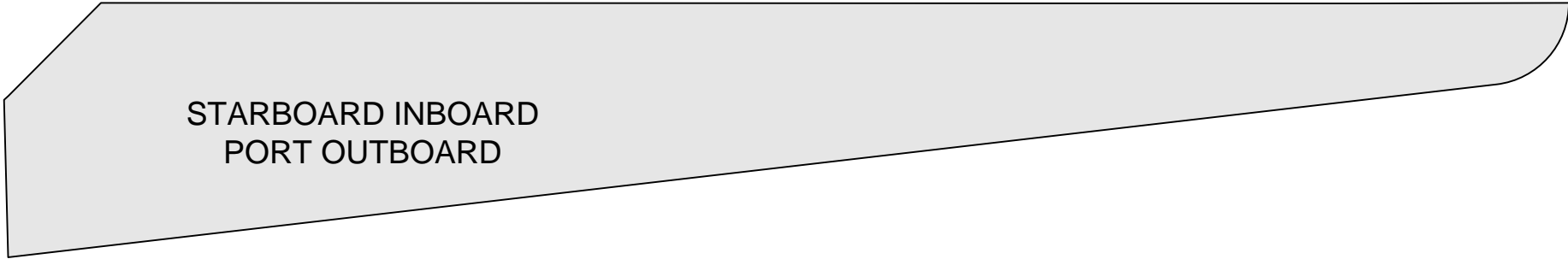
Ø 165.10





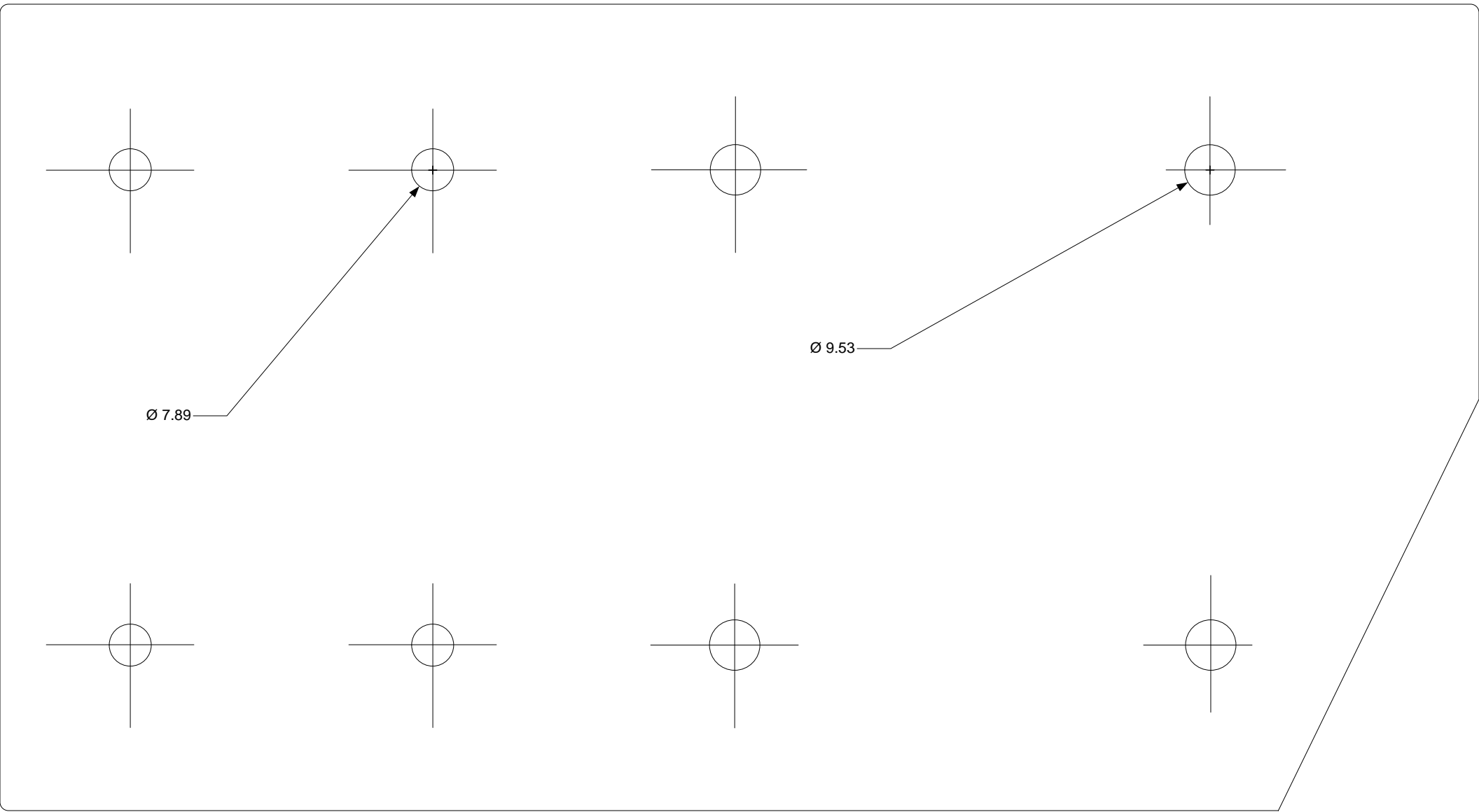
STARBOARD OUTBOARD
PORT INBOARD

A light gray trapezoidal template with a short vertical edge on the left, a long horizontal edge at the bottom, and a curved edge on the right. The top edge is slightly angled downwards from left to right.

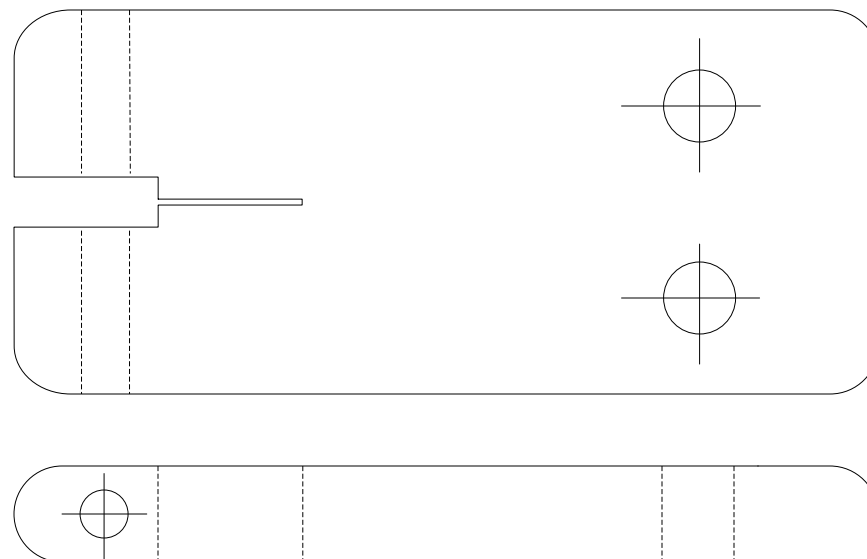


STARBOARD INBOARD
PORT OUTBOARD

A light gray trapezoidal template, a mirror image of the one above. It has a short vertical edge on the left, a long horizontal edge at the top, and a curved edge on the right. The bottom edge is slightly angled upwards from left to right.



S/N BEATRIX - KELLY-PETERSON 44 #286 (1980)	TITLE Removable Davits - Backing Plate Template	PAGE 25 OF 28	SCALE 1: 1	DATE 5/03/2014	DRAWN BY JEFF STANDER
---	--	------------------	---------------	-------------------	--------------------------



Waterjet Cutting	\$150
Exit Blocks (2), Triple Block (4)	\$148
Aluminum	\$64
Powder Coating	\$110
Stainless Pins	\$60
Lathe work on Stainless Pins	\$80
Delrin	\$20
Lathe work on Bushings	?

